

APPENDIX A-4

NATURAL RESOURCE CONSERVATION (NRCS) SOILS MAPS

BLUE MARLIN OFFSHORE PORT PROJECT - COVER SHEET - PROPOSED ONSHORE PIPELINE



BLUE MARLIN OFFSHORE PORT PROJECT VICINITY MAP

BLUE MARLIN OFFSHORE PORT PROJECT
Proposed Onshore Pipeline
Appendix A-4 Soils Map

BLUE MARLIN OFFSHORE PORT PROJECT
COVER SHEET- PROPOSED ONSHORE PIPELINE

COUNTY/PARISH:	N/A	DRAWN BY:	JC
STATE:	N/A	CHECKED BY:	CW

DATE: 2020-09-15 PROJECTION: NAD83 | UTM ZONE 15

PREPARED BY:
EXP Energy Services Inc.

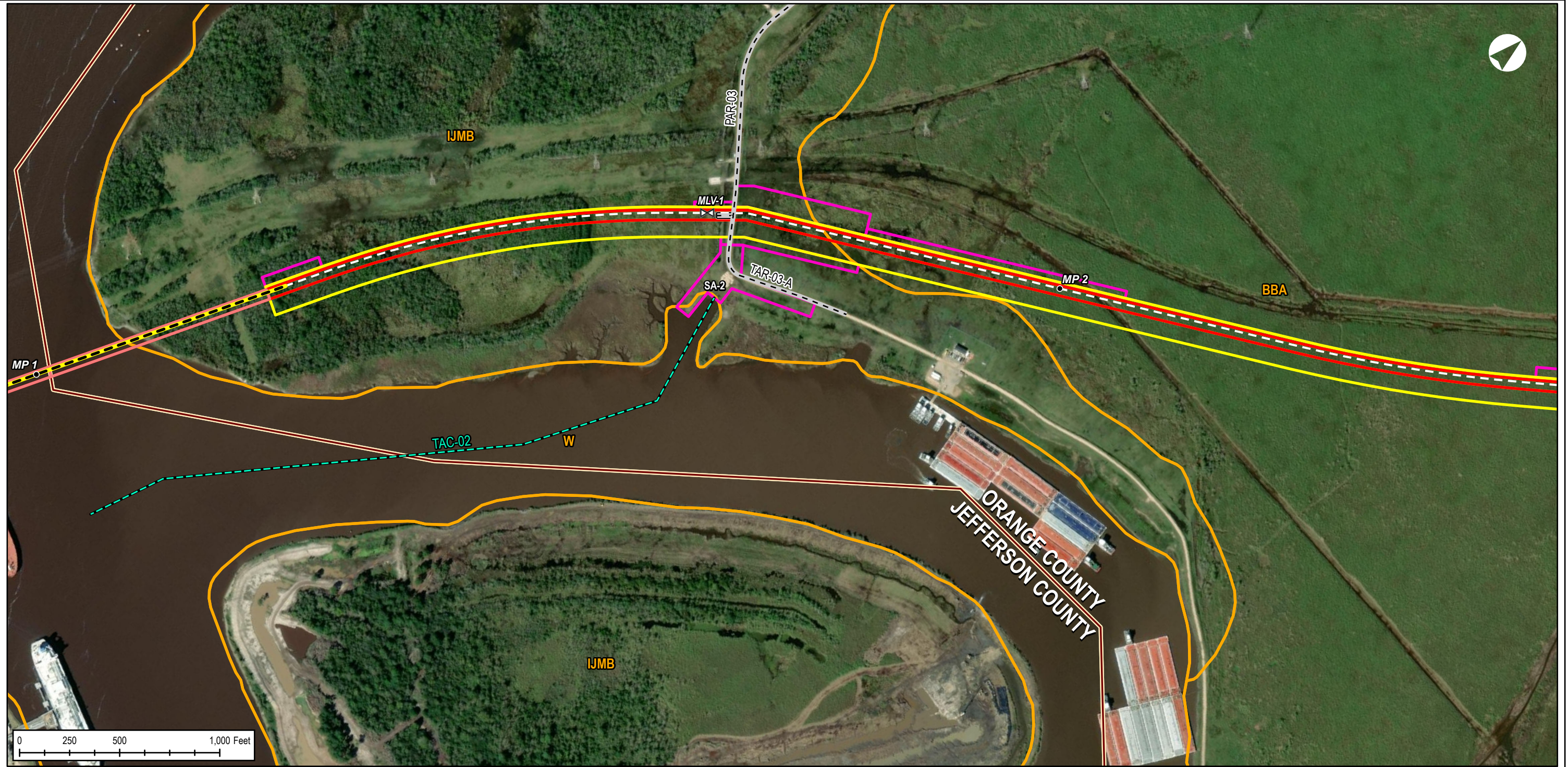
T: +1.713.439.3600
 F: +1.713.963.9085
 1800 WEST LOOP SOUTH, SUITE 850
 HOUSTON, TX 77027, USA
www.exp.com



- BUILDINGS • EARTH & ENVIRONMENT • ENERGY •
- INDUSTRIAL • INFRASTRUCTURE • SUSTAINABILITY •

DWG: 0801-03-002 SHEET: COVER

BLUE MARLIN OFFSHORE PORT PROJECT - APPENDIX A-4 - SOILS MAP - PROJECT CENTERLINE, TAC-02, & WORKSPACE



BLUE MARLIN OFFSHORE PORT PROJECT VICINITY MAP

LEGEND	
• PROPOSED ONSHORE PIPELINE MILEPOST	— ATWS
— CANAL	— TEMPORARY EASEMENT
- - ACCESS ROAD	— PERMANENT EASEMENT
⊗ VALVE	— HDD EASEMENT
— PROPOSED ONSHORE PIPELINE CL	— SOILS DATA (SSUGRO)
— PROPOSED ONSHORE PIPELINE CL (HDD SEGMENT)	— COUNTY
— PERMANENT ACCESS ROAD EASEMENT	

BLUE MARLIN OFFSHORE PORT PROJECT APPENDIX A-4 - SOILS MAP			
COUNTY/PARISH:	ORANGE	DRAWN BY:	JC
STATE:	TEXAS	CHECKED BY:	CW
DATE:	2020-09-18	PROJECTION:	NAD83 UTM ZONE 15

PREPARED BY:
EXP Energy Services Inc.
 T: +1.713.439.3600
 F: +1.713.963.9085
 1800 WEST LOOP SOUTH, SUITE 850
 HOUSTON, TX 77027, USA
www.exp.com



• BUILDINGS • EARTH & ENVIRONMENT • ENERGY •
 • INDUSTRIAL • INFRASTRUCTURE • SUSTAINABILITY •

DWG: 0801-03-002 SHEET: 2

BLUE MARLIN OFFSHORE PORT PROJECT - APPENDIX A-4 - SOILS MAP - PROJECT CENTERLINE, TAR-08, TA-09, TAR-10, & WORKSPACE



BLUE MARLIN OFFSHORE PORT PROJECT VICINITY MAP

LEGEND

- PROPOSED ONSHORE PIPELINE MILEPOST
- - ACCESS ROAD
- PROPOSED ONSHORE PIPELINE CL
- PROPOSED ONSHORE PIPELINE CL (HDD SEGMENT)
- ATWS
- TEMPORARY EASEMENT
- PERMANENT EASEMENT
- HDD EASEMENT
- SOILS DATA (SSUGRO)
- LOWER NECHES WILDLIFE MANAGEMENT AREA
- COUNTY

BLUE MARLIN OFFSHORE PORT PROJECT
APPENDIX A-4 - SOILS MAP

COUNTY/PARISH:	ORANGE	DRAWN BY:	JC
STATE:	TEXAS	CHECKED BY:	CW
DATE:	2020-09-18	PROJECTION:	NAD83 UTM ZONE 15

PREPARED BY:

EXP Energy Services Inc.

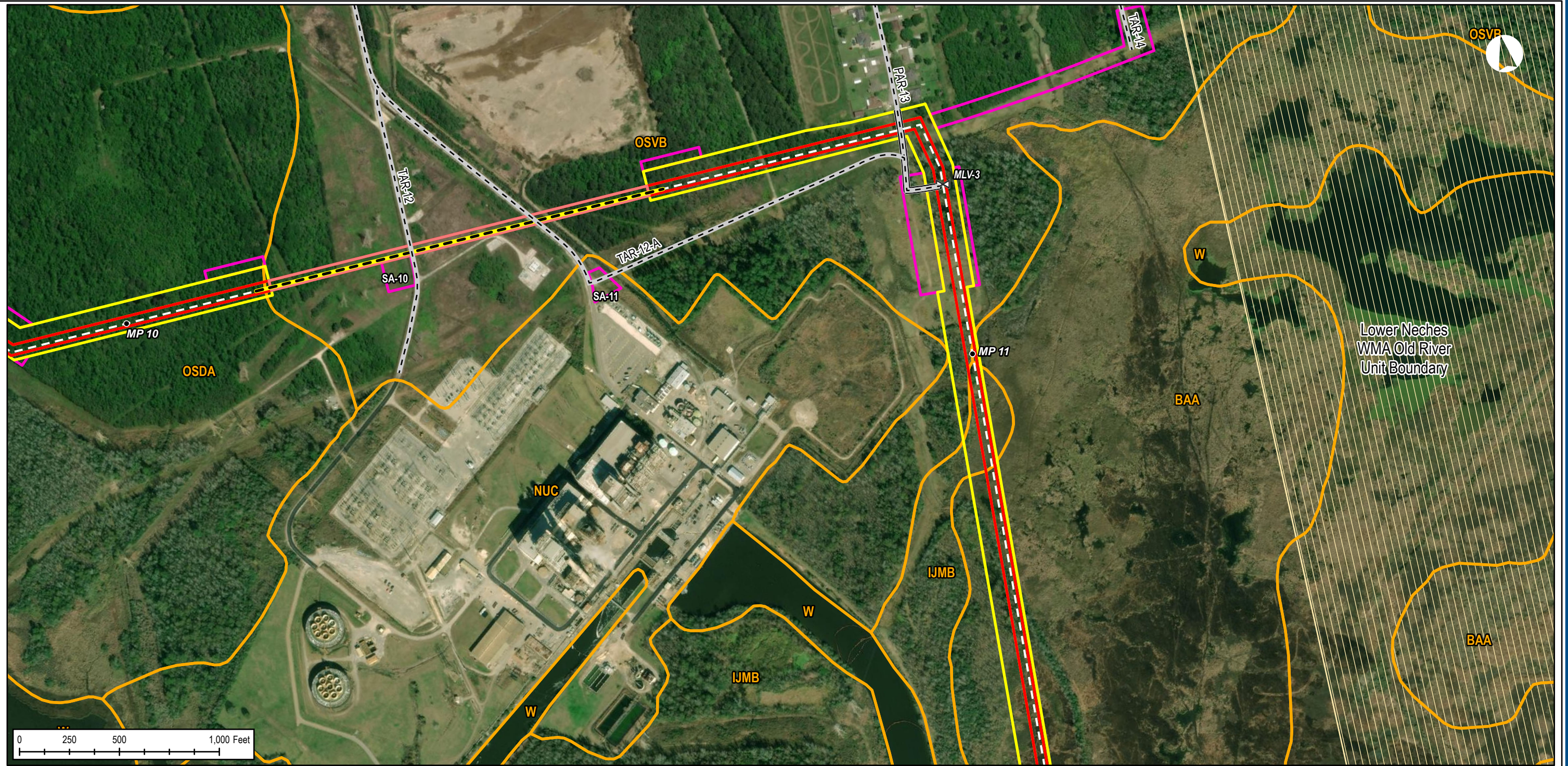
T: +1.713.439.3600
F: +1.713.963.9085
1800 WEST LOOP SOUTH, SUITE 850
HOUSTON, TX 77027, USA
www.exp.com



• BUILDINGS • EARTH & ENVIRONMENT • ENERGY •
• INDUSTRIAL • INFRASTRUCTURE • SUSTAINABILITY •

DWG: 0801-03-002 SHEET: 6

BLUE MARLIN OFFSHORE PORT PROJECT - APPENDIX A-4 - SOILS MAP - PROJECT CENTERLINE, TAR-12-A, & WORKSPACE



BLUE MARLIN OFFSHORE PORT PROJECT VICINITY MAP

LEGEND

- PROPOSED ONSHORE PIPELINE MILEPOST
- - ACCESS ROAD
- ⊗ VALVE
- PROPOSED ONSHORE PIPELINE CL
- PROPOSED ONSHORE PIPELINE CL (HDD SEGMENT)
- ▬ PERMANENT ACCESS ROAD EASEMENT
- ▭ ATWS
- ▭ TEMPORARY EASEMENT
- ▭ PERMANENT EASEMENT
- ▭ HDD EASEMENT
- ▭ SOILS DATA (SSUGRO)
- ▭ LOWER NECHES WILDLIFE MANAGEMENT AREA
- ▭ COUNTY

BLUE MARLIN OFFSHORE PORT PROJECT
APPENDIX A-4 - SOILS MAP

COUNTY/PARISH:	ORANGE	DRAWN BY:	JC
STATE:	TEXAS	CHECKED BY:	CW
DATE:	2020-09-18	PROJECTION:	NAD83 UTM ZONE 15

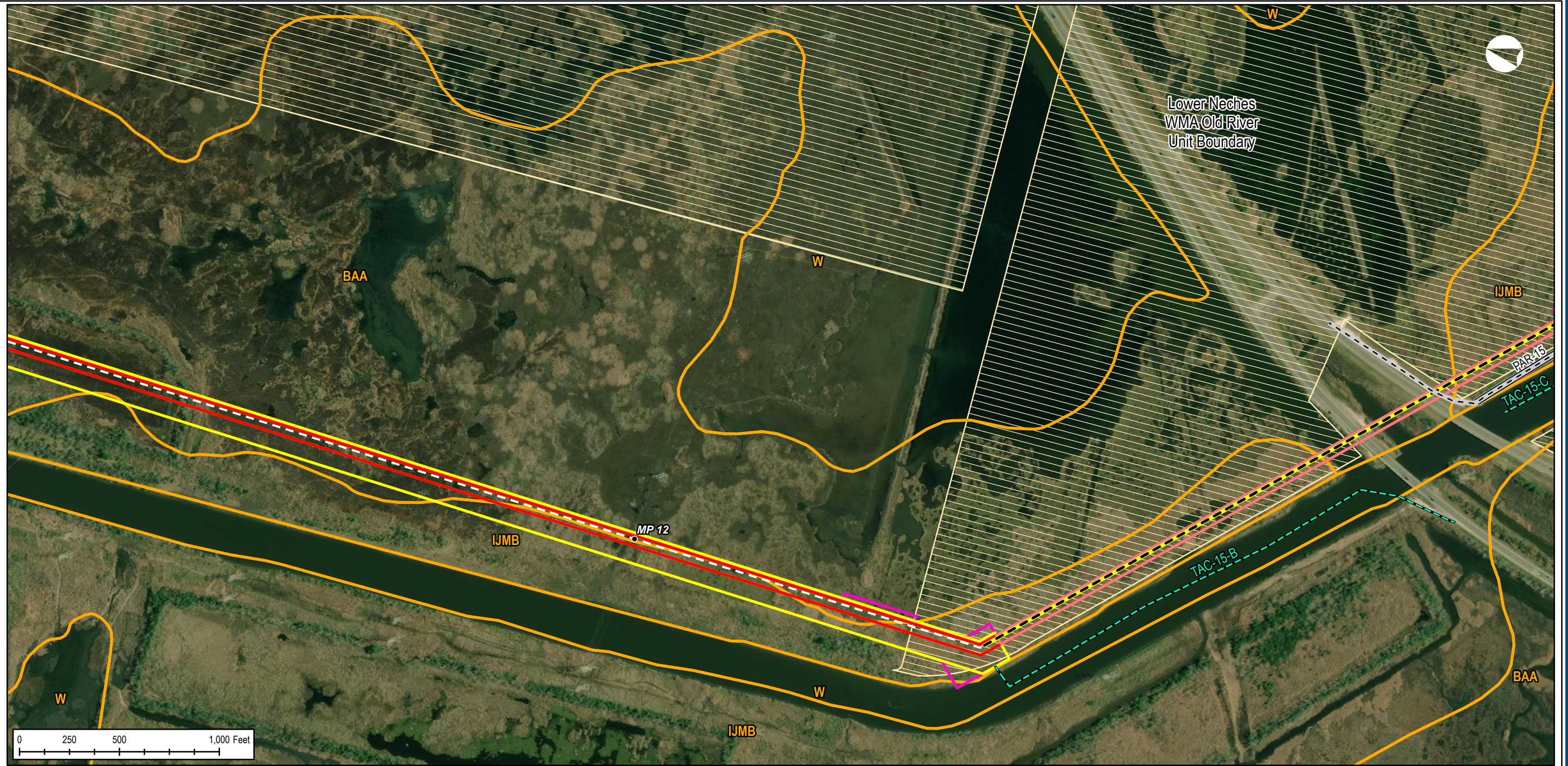
PREPARED BY:
EXP Energy Services Inc.
T: +1.713.439.3600
F: +1.713.963.9085
1800 WEST LOOP SOUTH, SUITE 850
HOUSTON, TX 77027, USA
www.exp.com

exp.

• BUILDINGS • EARTH & ENVIRONMENT • ENERGY •
• INDUSTRIAL • INFRASTRUCTURE • SUSTAINABILITY •

DWG: 0801-03-002 SHEET: 8

BLUE MARLIN OFFSHORE PORT PROJECT - APPENDIX A-4 - SOILS MAP - PROJECT CENTERLINE, PAR-15, & WORKSPACE



BLUE MARLIN OFFSHORE PORT PROJECT VICINITY MAP

LEGEND	
• PROPOSED ONSHORE PIPELINE MILEPOST	TEMPORARY EASEMENT
— CANAL	PERMANENT EASEMENT
- - ACCESS ROAD	HDD EASEMENT
— PROPOSED ONSHORE PIPELINE CL	SOILS DATA (SSUGRO)
— PROPOSED ONSHORE PIPELINE CL (HDD SEGMENT)	LOWER NECHES WILDLIFE MANAGEMENT AREA
— PERMANENT ACCESS ROAD EASEMENT	COUNTY
— ATWS	

BLUE MARLIN OFFSHORE PORT PROJECT APPENDIX A-4 - SOILS MAP			
COUNTY/PARISH:	ORANGE	DRAWN BY:	JC
STATE:	TEXAS	CHECKED BY:	CW
DATE:	2020-09-18	PROJECTION:	NAD83 UTM ZONE 15

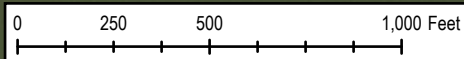
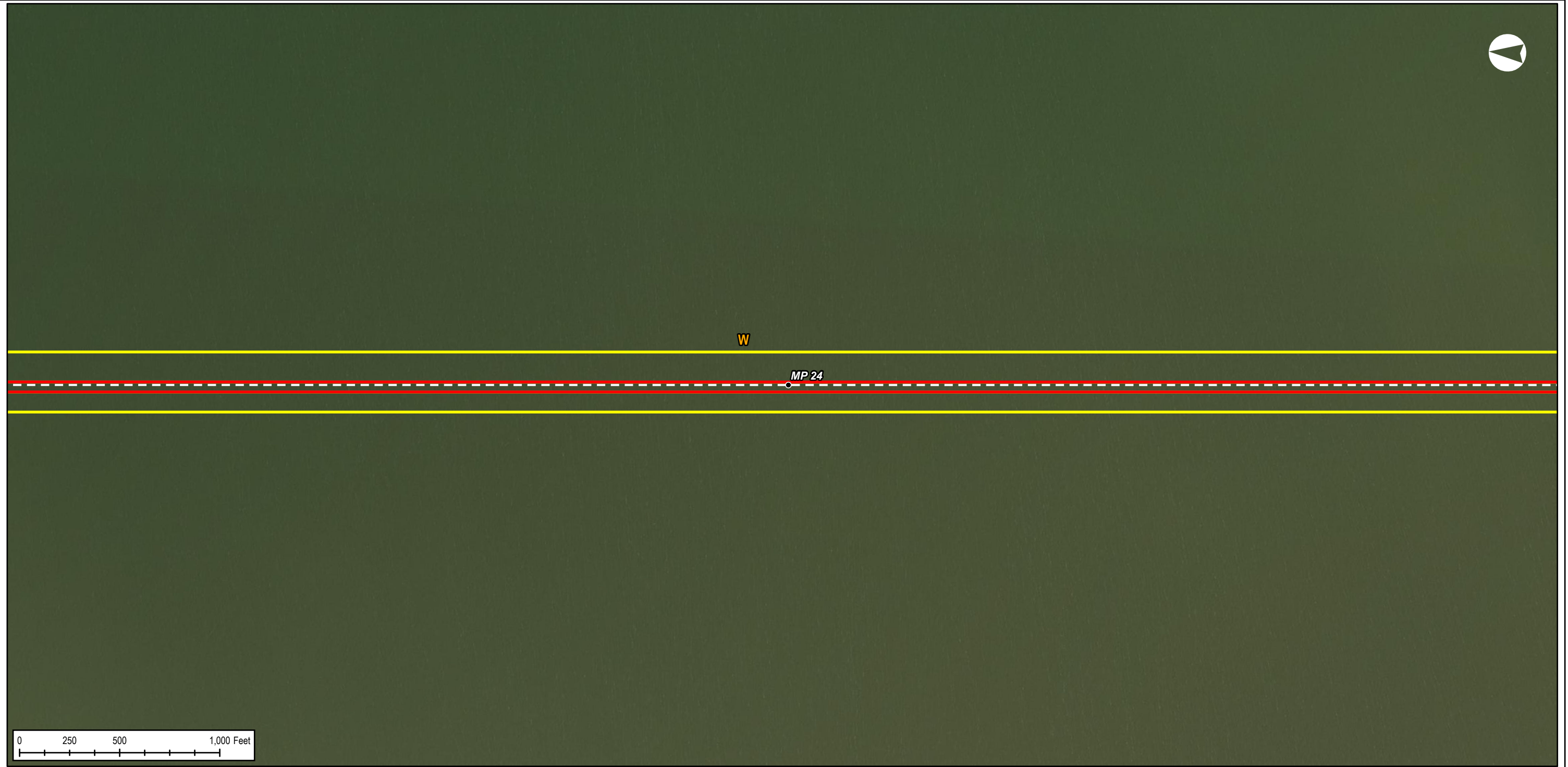
PREPARED BY:
EXP Energy Services Inc.
 T: +1.713.439.3600
 F: +1.713.963.9085
 1800 WEST LOOP SOUTH, SUITE 850
 HOUSTON, TX 77027, USA
www.exp.com

exp.

• BUILDINGS • EARTH & ENVIRONMENT • ENERGY •
 • INDUSTRIAL • INFRASTRUCTURE • SUSTAINABILITY •

DWG: 0801-03-002 SHEET: 9

BLUE MARLIN OFFSHORE PORT PROJECT - APPENDIX A-4 - SOILS MAP - PROJECT CENTERLINE & WORKSPACE



BLUE MARLIN OFFSHORE PORT PROJECT VICINITY MAP

LEGEND

- PROPOSED ONSHORE PIPELINE MILEPOST
- - PROPOSED ONSHORE PIPELINE CL
- ▭ TEMPORARY EASEMENT
- ▭ PERMANENT EASEMENT
- ▭ SOILS DATA (SSUGRO)
- ▭ COUNTY

BLUE MARLIN OFFSHORE PORT PROJECT
APPENDIX A-4 - SOILS MAP

COUNTY/PARISH:	CAMERON	DRAWN BY:	JC
STATE:	LOUISIANA	CHECKED BY:	CW

DATE: 2020-09-18 PROJECTION: NAD83 | UTM ZONE 15

PREPARED BY:

EXP Energy Services Inc.

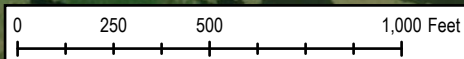
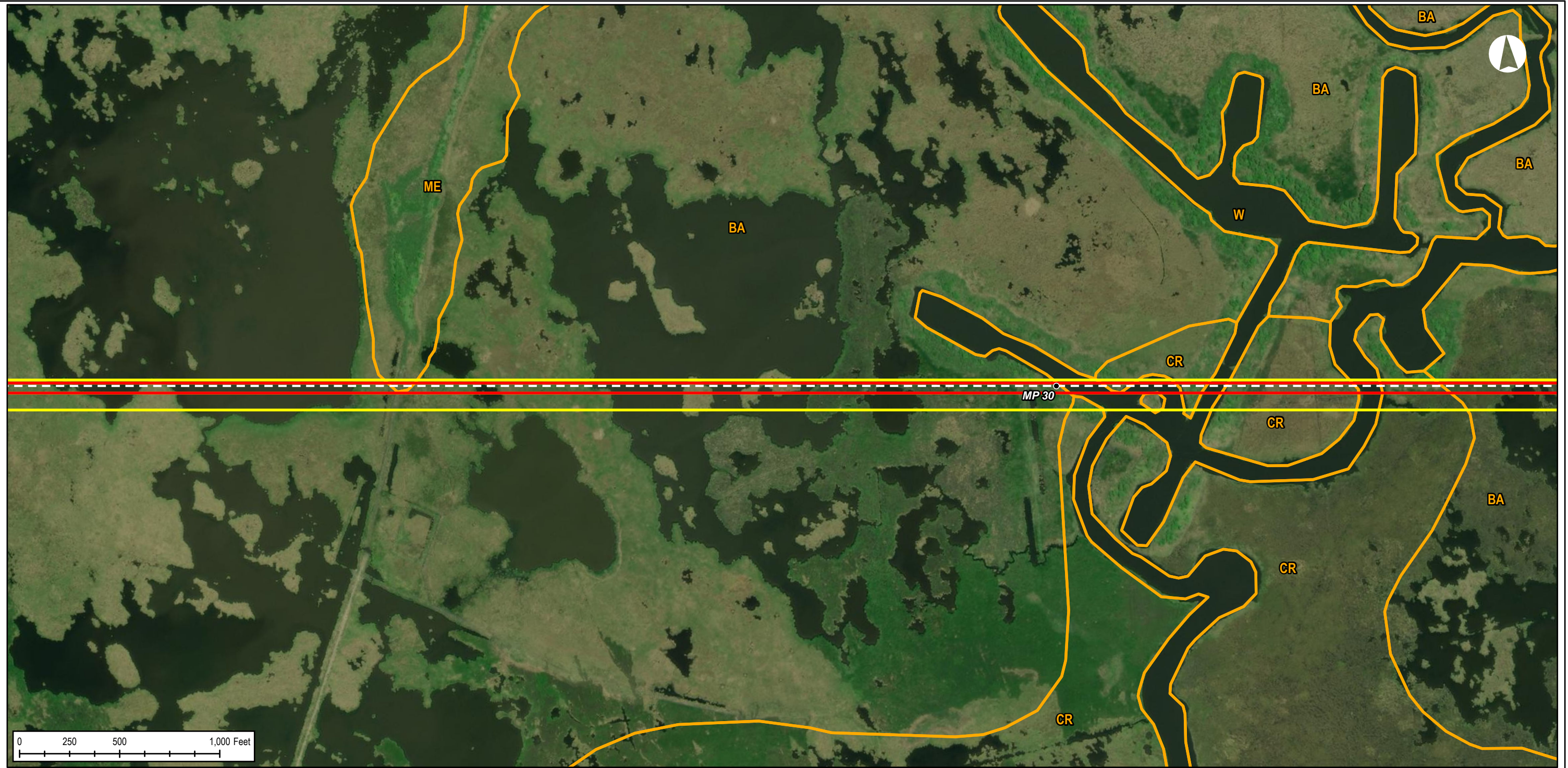
T: +1.713.439.3600
F: +1.713.963.9085
1800 WEST LOOP SOUTH, SUITE 850
HOUSTON, TX 77027, USA
www.exp.com



• BUILDINGS • EARTH & ENVIRONMENT • ENERGY •
• INDUSTRIAL • INFRASTRUCTURE • SUSTAINABILITY •

DWG: 0801-03-002 SHEET: 17

BLUE MARLIN OFFSHORE PORT PROJECT - APPENDIX A-4 - SOILS MAP - PROJECT CENTERLINE & WORKSPACE



BLUE MARLIN OFFSHORE PORT PROJECT VICINITY MAP


- LEGEND**
- PROPOSED ONSHORE PIPELINE MILEPOST
 - - - PROPOSED ONSHORE PIPELINE CL
 - ▭ TEMPORAY EASEMENT
 - ▭ PERMANENT EASEMENT
 - ▭ SOILS DATA (SSUGRO)
 - ▭ COUNTY

BLUE MARLIN OFFSHORE PORT PROJECT
APPENDIX A-4 - SOILS MAP

COUNTY/PARISH:	CAMERON	DRAWN BY:	JC
STATE:	LOUISIANA	CHECKED BY:	CW
DATE:	2020-09-18	PROJECTION:	NAD83 UTM ZONE 15

PREPARED BY:
EXP Energy Services Inc.

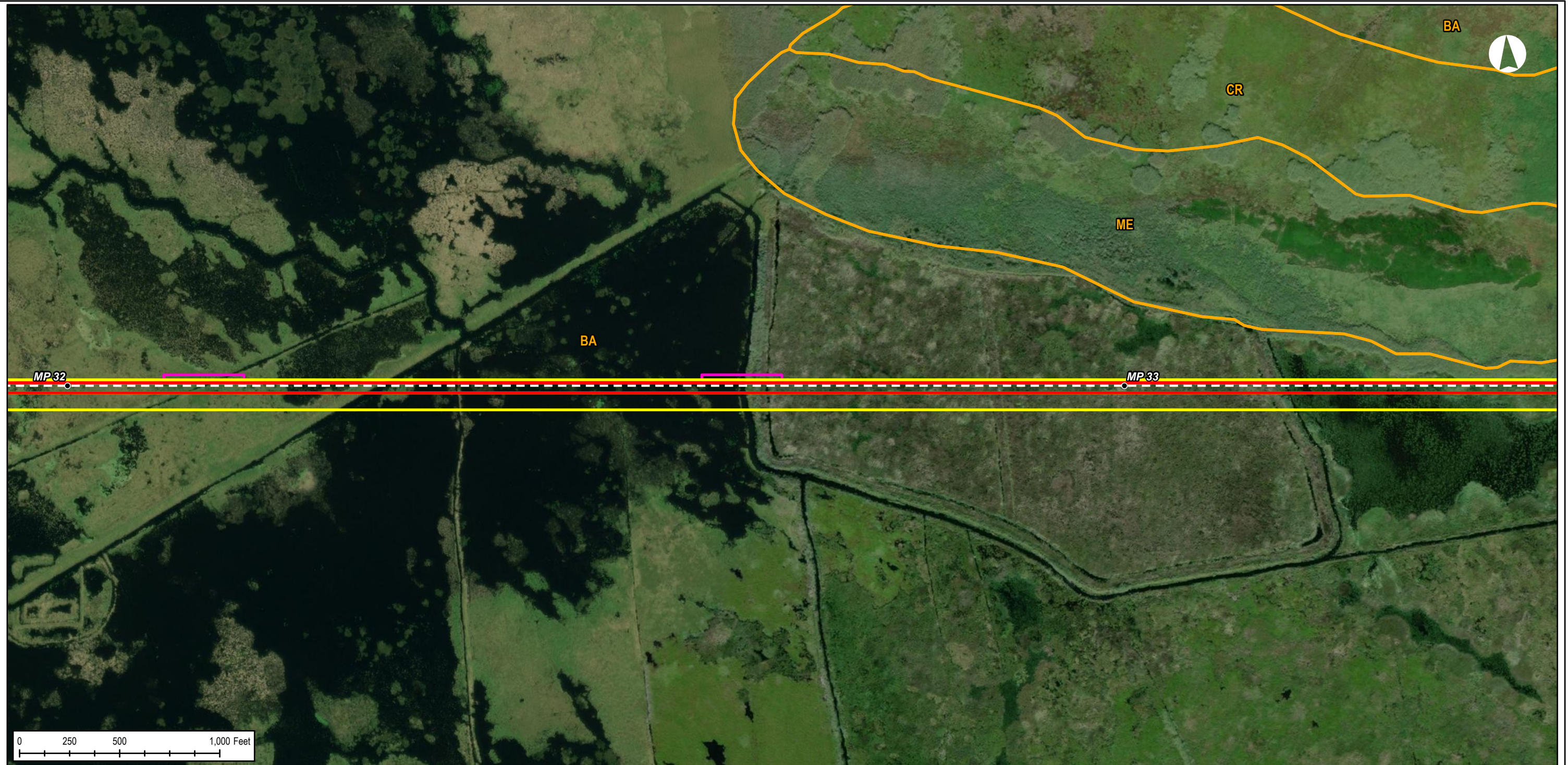
T: +1.713.439.3600
F: +1.713.963.9085
1800 WEST LOOP SOUTH, SUITE 850
HOUSTON, TX 77027, USA
www.exp.com



• BUILDINGS • EARTH & ENVIRONMENT • ENERGY •
• INDUSTRIAL • INFRASTRUCTURE • SUSTAINABILITY •

DWG: 0801-03-002 SHEET: 21

BLUE MARLIN OFFSHORE PORT PROJECT - APPENDIX A-4 - SOILS MAP - PROJECT CENTERLINE & WORKSPACE



BLUE MARLIN OFFSHORE PORT PROJECT VICINITY MAP


- LEGEND**
- PROPOSED ONSHORE PIPELINE MILEPOST
 - - - PROPOSED ONSHORE PIPELINE CL
 - █ ATWS
 - █ TEMPORARY EASEMENT
 - █ PERMANENT EASEMENT
 - █ SOILS DATA (SSUGRO)
 - █ COUNTY

BLUE MARLIN OFFSHORE PORT PROJECT
APPENDIX A-4 - SOILS MAP

COUNTY/PARISH:	CAMERON	DRAWN BY:	JC
STATE:	LOUISIANA	CHECKED BY:	CW
DATE:	2020-09-18	PROJECTION:	NAD83 UTM ZONE 15

PREPARED BY:
EXP Energy Services Inc.

T: +1.713.439.3600
F: +1.713.963.9085
1800 WEST LOOP SOUTH, SUITE 850
HOUSTON, TX 77027, USA
www.exp.com



• BUILDINGS • EARTH & ENVIRONMENT • ENERGY •
• INDUSTRIAL • INFRASTRUCTURE • SUSTAINABILITY •

DWG: 0801-03-002 SHEET: 23

BLUE MARLIN OFFSHORE PORT PROJECT - APPENDIX A-4 - SOILS MAP - PROJECT CENTERLINE & WORKSPACE



BLUE MARLIN OFFSHORE PORT PROJECT VICINITY MAP

- LEGEND**
- PROPOSED ONSHORE PIPELINE MILEPOST
 - PROPOSED ONSHORE PIPELINE CL
 - ▭ ATWS
 - ▭ TEMPORARY EASEMENT
 - ▭ PERMANENT EASEMENT
 - ▭ SOILS DATA (SSUGRO)
 - ▭ COUNTY

BLUE MARLIN OFFSHORE PORT PROJECT
APPENDIX A-4 - SOILS MAP

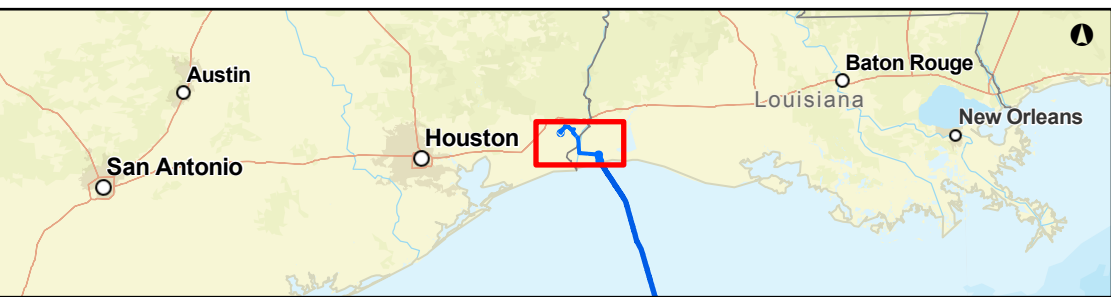
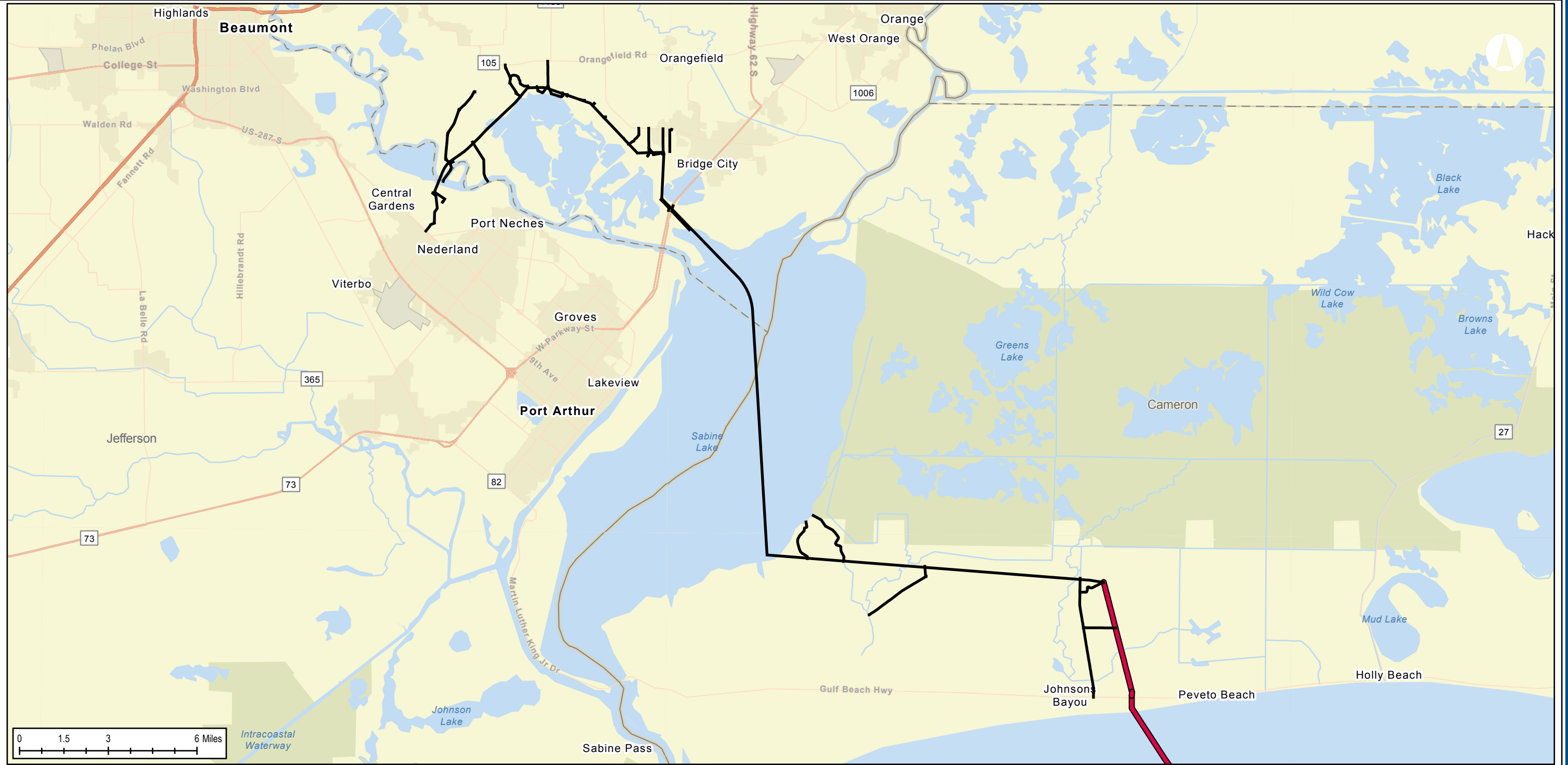
COUNTY/PARISH:	CAMERON	DRAWN BY:	JC
STATE:	LOUISIANA	CHECKED BY:	CW
DATE:	2020-09-18	PROJECTION:	NAD83 UTM ZONE 15

PREPARED BY:
EXP Energy Services Inc.
T: +1.713.439.3600
F: +1.713.963.9085
1800 WEST LOOP SOUTH, SUITE 850
HOUSTON, TX 77027, USA
www.exp.com



• BUILDINGS • EARTH & ENVIRONMENT • ENERGY •
• INDUSTRIAL • INFRASTRUCTURE • SUSTAINABILITY •

BLUE MARLIN OFFSHORE PORT PROJECT - COVER SHEET - EXISTING STINGRAY MAINLINE



BLUE MARLIN OFFSHORE PORT PROJECT VICINITY MAP

BLUE MARLIN OFFSHORE PORT PROJECT
Existing Stingray Mainline
Appendix A-4 Soils Map

BLUE MARLIN OFFSHORE PORT PROJECT
COVER SHEET- EXISTING STINGRAY MAINLINE

COUNTY/PARISH: N/A DRAWN BY: JC
 STATE: N/A CHECKED BY: CW

DATE: 2020-09-15 PROJECTION: NAD83 | UTM ZONE 15

PREPARED BY:
EXP Energy Services Inc.

T: +1.713.439.3600
 F: +1.713.963.9085
 1800 WEST LOOP SOUTH, SUITE 850
 HOUSTON, TX 77027, USA
www.exp.com



• BUILDINGS • EARTH & ENVIRONMENT • ENERGY •
 • INDUSTRIAL • INFRASTRUCTURE • SUSTAINABILITY •

DWG: 0801-03-002 SHEET: COVER

BLUE MARLIN OFFSHORE PORT PROJECT - APPENDIX A-4 - SOILS MAP - PROJECT CENTERLINE & WORKSPACE



BLUE MARLIN OFFSHORE PORT PROJECT VICINITY MAP

LEGEND

● EXISTING STINGRAY MAINLINE MILEPOST	▬ EXISTING STINGRAY EASEMENT (NO IMPACT)
● PROPOSED ONSHORE PIPELINE MILEPOST	▬ TEMPORARY EASEMENT
- - ACCESS ROAD	▬ PERMANENT EASEMENT
⊗ VALVE	▬ EXISTING FACILITY FOOTPRINT / STINGRAY EASEMENT
▬ EXISTING STINGRAY MAINLINE	▬ SOILS DATA (SSUGRO)
▬ PROPOSED ONSHORE PIPELINE CL	▬ COUNTY
▬ ATWS	

BLUE MARLIN OFFSHORE PORT PROJECT
APPENDIX A-4 - SOILS MAP

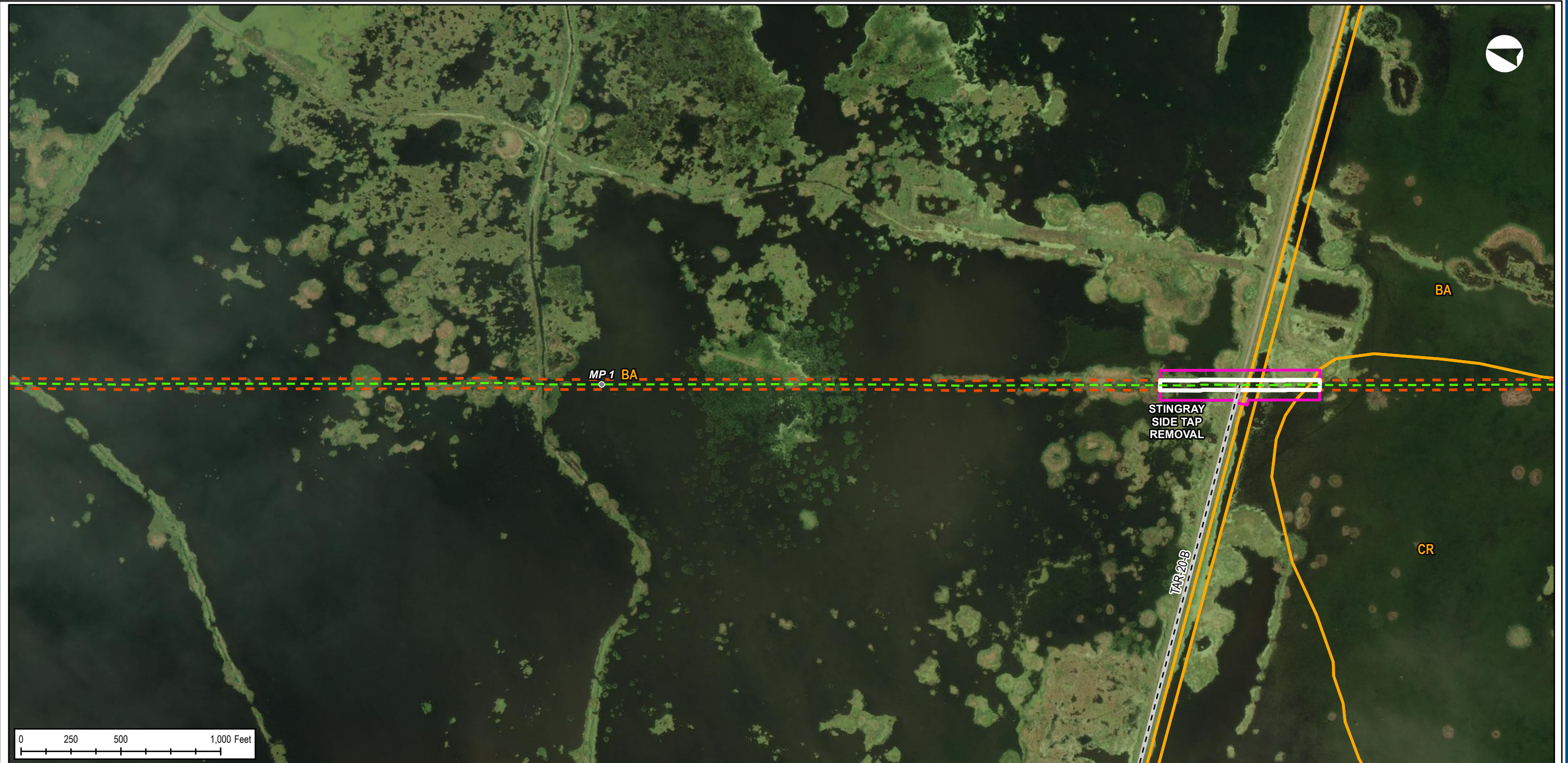
COUNTY/PARISH:	CAMERON	DRAWN BY:	JC
STATE:	LOUISIANA	CHECKED BY:	CW

PREPARED BY:
EXP Energy Services Inc.
T: +1.713.439.3600
F: +1.713.963.9085
1800 WEST LOOP SOUTH, SUITE 850
HOUSTON, TX 77027, USA
www.exp.com



• BUILDINGS • EARTH & ENVIRONMENT • ENERGY •
• INDUSTRIAL • INFRASTRUCTURE • SUSTAINABILITY •

BLUE MARLIN OFFSHORE PORT PROJECT - APPENDIX A-4 - SOILS MAP - PROJECT CENTERLINE & WORKSPACE



BLUE MARLIN OFFSHORE PORT PROJECT VICINITY MAP

- LEGEND**
- EXISTING STINGRAY MAINLINE MILEPOST
 - - ACCESS ROAD
 - - EXISTING STINGRAY MAINLINE
 - ▭ ATWS
 - - EXISTING STINGRAY EASEMENT (NO IMPACT)
 - - EXISTING FACILITY FOOTPRINT / STINGRAY EASEMENT
 - ▭ SOILS DATA (SSUGRO)
 - ▭ COUNTY

BLUE MARLIN OFFSHORE PORT PROJECT
APPENDIX A-4 - SOILS MAP

COUNTY/PARISH:	CAMERON	DRAWN BY:	JC
STATE:	LOUISIANA	CHECKED BY:	CW

DATE:	2020-09-18	PROJECTION:	NAD83 UTM ZONE 15
-------	------------	-------------	---------------------

PREPARED BY:
EXP Energy Services Inc.
T: +1.713.439.3600
F: +1.713.963.9085
1800 WEST LOOP SOUTH, SUITE 850
HOUSTON, TX 77027, USA
www.exp.com

exp.

• BUILDINGS • EARTH & ENVIRONMENT • ENERGY •
• INDUSTRIAL • INFRASTRUCTURE • SUSTAINABILITY •

BLUE MARLIN OFFSHORE PORT PROJECT - APPENDIX A-4 - SOILS MAP - PROJECT CENTERLINE & WORKSPACE



BLUE MARLIN OFFSHORE PORT PROJECT VICINITY MAP

- LEGEND**
- EXISTING STINGRAY MAINLINE MILEPOST
 - EXISTING STINGRAY MAINLINE
 - - - EXISTING STINGRAY EASEMENT (NO IMPACT)
 - ▭ SOILS DATA (SSUGRO)
 - ▭ COUNTY

BLUE MARLIN OFFSHORE PORT PROJECT APPENDIX A-4 - SOILS MAP			
COUNTY/PARISH:	CAMERON	DRAWN BY:	JC
STATE:	LOUISIANA	CHECKED BY:	CW
DATE:	2020-09-18	PROJECTION:	NAD83 UTM ZONE 15

PREPARED BY:
EXP Energy Services Inc.
T: +1.713.439.3600
F: +1.713.963.9085
1800 WEST LOOP SOUTH, SUITE 850
HOUSTON, TX 77027, USA
www.exp.com



• BUILDINGS • EARTH & ENVIRONMENT • ENERGY •
• INDUSTRIAL • INFRASTRUCTURE • SUSTAINABILITY •

DWG:	0801-03-002	SHEET:	28
------	-------------	--------	----

BLUE MARLIN OFFSHORE PORT PROJECT - APPENDIX A-4 - SOILS MAP - PROJECT CENTERLINE & WORKSPACE



BLUE MARLIN OFFSHORE PORT PROJECT VICINITY MAP

- LEGEND**
- EXISTING STINGRAY MAINLINE MILEPOST
 - ⊗ VALVE
 - EXISTING STINGRAY MAINLINE
 - ATWS
 - - - EXISTING STINGRAY EASEMENT (NO IMPACT)
 - ▭ EXISTING FACILITY FOOTPRINT / STINGRAY EASEMENT
 - SOILS DATA (SSUGRO)
 - ▭ COUNTY

BLUE MARLIN OFFSHORE PORT PROJECT
APPENDIX A-4 - SOILS MAP

COUNTY/PARISH:	CAMERON	DRAWN BY:	JC
STATE:	LOUISIANA	CHECKED BY:	CW
DATE:	2020-09-18	PROJECTION:	NAD83 UTM ZONE 15

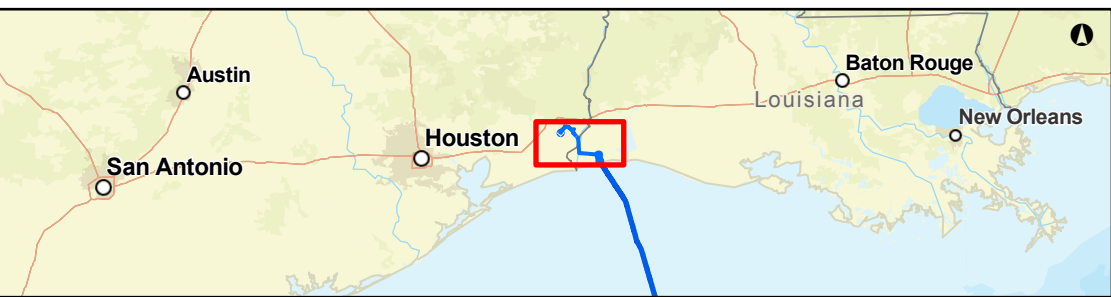
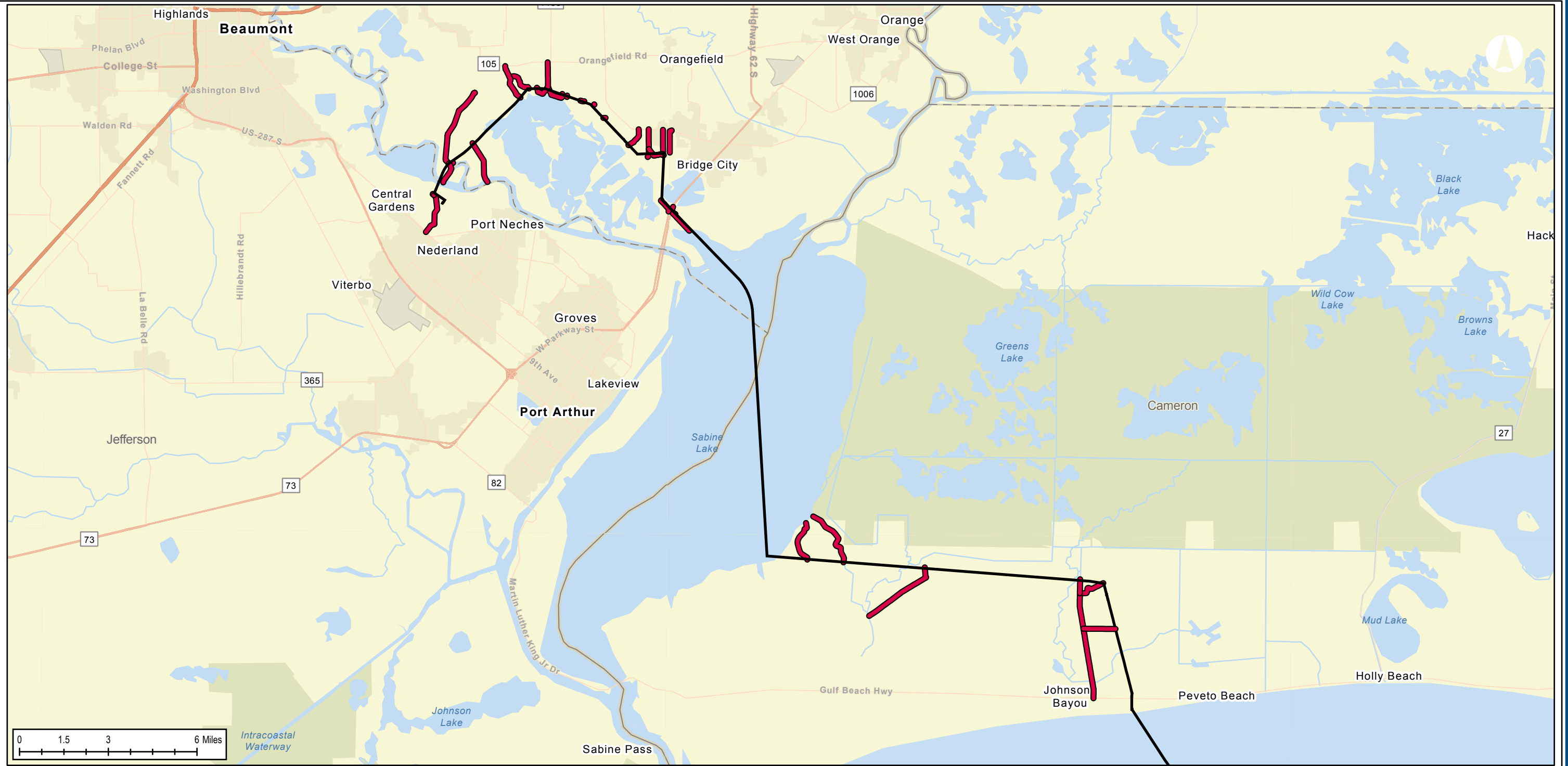
PREPARED BY:
EXP Energy Services Inc.
T: +1.713.439.3600
F: +1.713.963.9085
1800 WEST LOOP SOUTH, SUITE 850
HOUSTON, TX 77027, USA
www.exp.com

exp.

• BUILDINGS • EARTH & ENVIRONMENT • ENERGY •
• INDUSTRIAL • INFRASTRUCTURE • SUSTAINABILITY •

DWG: 0801-03-002 SHEET: 29

BLUE MARLIN OFFSHORE PORT PROJECT - COVER SHEET - ACCESS ROADS / CANALS



BLUE MARLIN OFFSHORE PORT PROJECT VICINITY MAP

BLUE MARLIN OFFSHORE PORT PROJECT
Project Access Roads and Canals
Appendix A-4 Soils Map

BLUE MARLIN OFFSHORE PORT PROJECT
COVER SHEET- ACCESS ROADS / CANALS

COUNTY/PARISH: N/A DRAWN BY: JC
 STATE: N/A CHECKED BY: CW

DATE: 2020-09-15 PROJECTION: NAD83 | UTM ZONE 15

PREPARED BY:
EXP Energy Services Inc.

T: +1.713.439.3600
 F: +1.713.963.9085
 1800 WEST LOOP SOUTH, SUITE 850
 HOUSTON, TX 77027, USA
www.exp.com



• BUILDINGS • EARTH & ENVIRONMENT • ENERGY •
 • INDUSTRIAL • INFRASTRUCTURE • SUSTAINABILITY •

DWG: 0801-03-002 SHEET: COVER

BLUE MARLIN OFFSHORE PORT PROJECT - APPENDIX A-4 - SOILS MAP - TAR-01



BLUE MARLIN OFFSHORE PORT PROJECT VICINITY MAP

- LEGEND**
- - ACCESS ROAD
 - ⊗ VALVE
 - PROPOSED ONSHORE PIPELINE CL
 - PROPOSED ONSHORE PIPELINE CL (HDD SEGMENT)
 - ATWS
 - TEMPORARY EASEMENT
 - PERMANENT EASEMENT
 - HDD EASEMENT
 - EXISTING FACILITY FOOTPRINT / STINGRAY EASEMENT
 - SOILS DATA (SSUGRO)
 - NEDERLAND TERMINAL BUILDOUT PROJECT
 - COUNTY

BLUE MARLIN OFFSHORE PORT PROJECT
APPENDIX A-4 - SOILS MAP

COUNTY/PARISH:	JEFFERSON	DRAWN BY:	JC
STATE:	TEXAS	CHECKED BY:	CW
DATE:	2020-09-18	PROJECTION:	NAD83 UTM ZONE 15

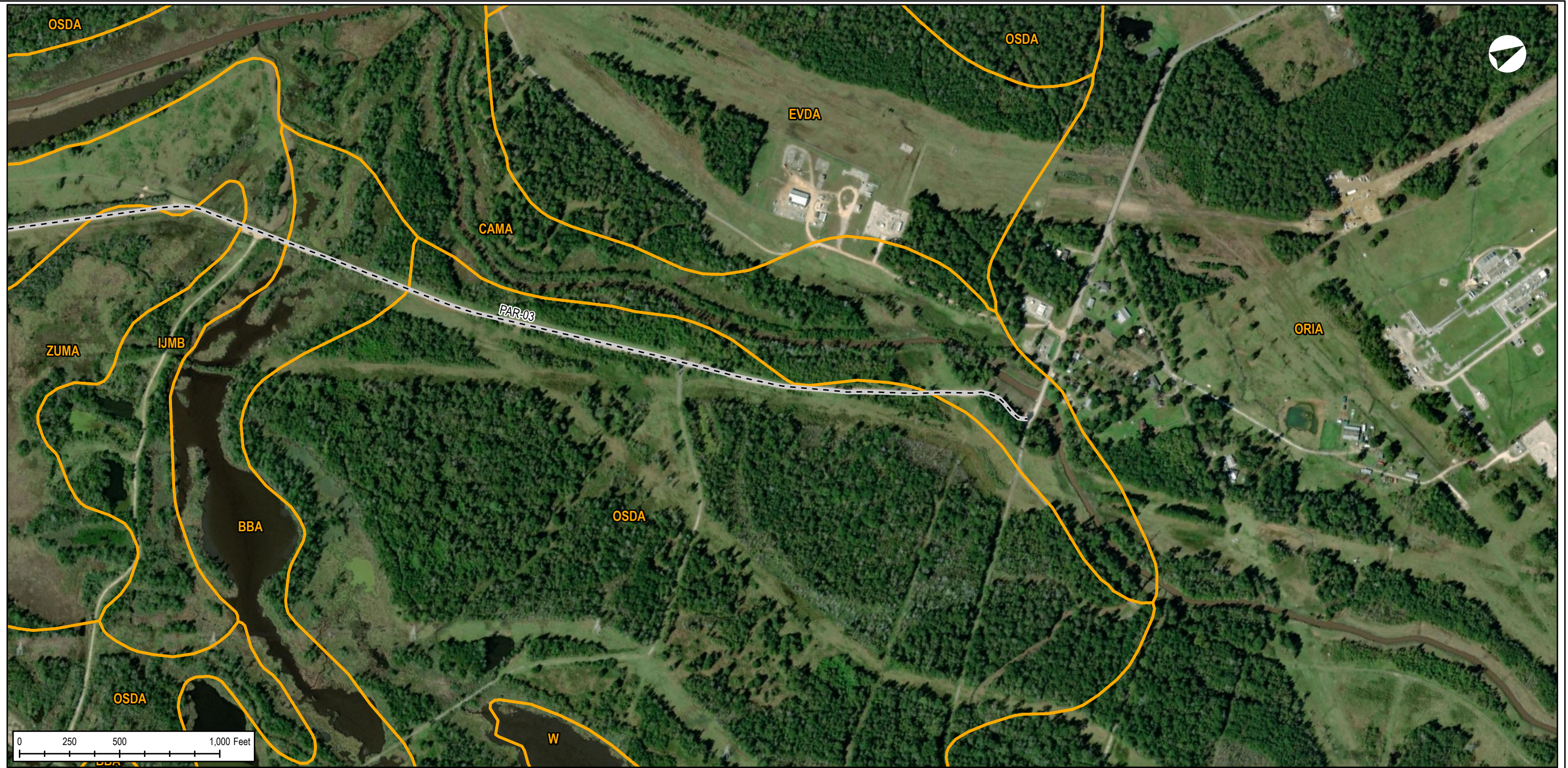
PREPARED BY:
EXP Energy Services Inc.
T: +1.713.439.3600
F: +1.713.963.9085
1800 WEST LOOP SOUTH, SUITE 850
HOUSTON, TX 77027, USA
www.exp.com

exp.

• BUILDINGS • EARTH & ENVIRONMENT • ENERGY •
• INDUSTRIAL • INFRASTRUCTURE • SUSTAINABILITY •

DWG: 0801-03-002 SHEET: 30

BLUE MARLIN OFFSHORE PORT PROJECT - APPENDIX A-4 - SOILS MAP - PAR-03



BLUE MARLIN OFFSHORE PORT PROJECT VICINITY MAP

- LEGEND**
- - ACCESS ROAD
 - SOILS DATA (SSUGRO)
 - COUNTY

BLUE MARLIN OFFSHORE PORT PROJECT
APPENDIX A-4 - SOILS MAP

COUNTY/PARISH:	ORANGE	DRAWN BY:	JC
STATE:	TEXAS	CHECKED BY:	CW

DATE: 2020-09-18 PROJECTION: NAD83 | UTM ZONE 15

PREPARED BY:
EXP Energy Services Inc.

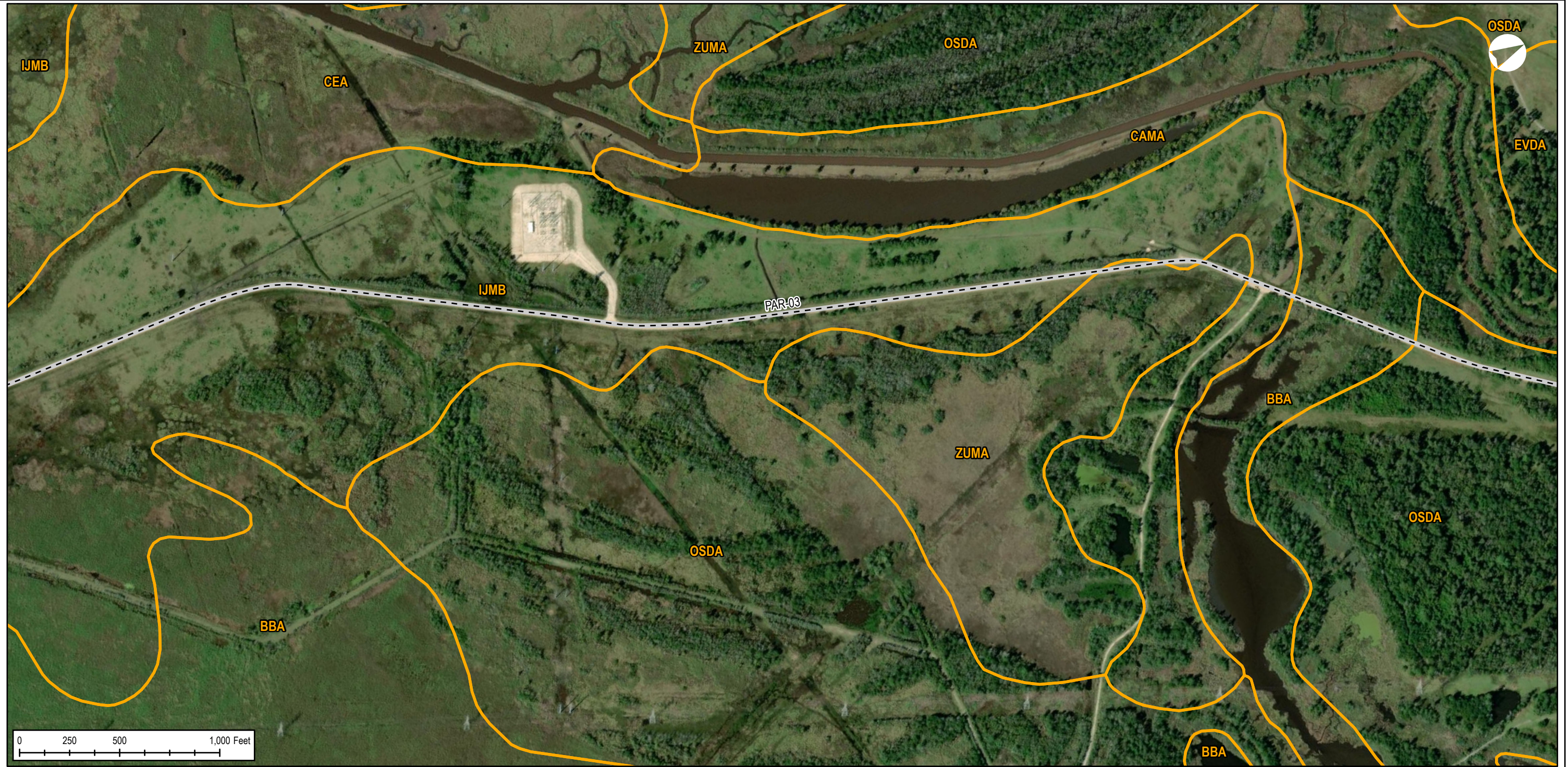
T: +1.713.439.3600
F: +1.713.963.9085
1800 WEST LOOP SOUTH, SUITE 850
HOUSTON, TX 77027, USA
www.exp.com



- BUILDINGS • EARTH & ENVIRONMENT • ENERGY •
- INDUSTRIAL • INFRASTRUCTURE • SUSTAINABILITY •

DWG: 0801-03-002 SHEET: 31

BLUE MARLIN OFFSHORE PORT PROJECT - APPENDIX A-4 - SOILS MAP - PAR-03



BLUE MARLIN OFFSHORE PORT PROJECT VICINITY MAP

- LEGEND**
- - ACCESS ROAD
 - SOILS DATA (SSUGRO)
 - COUNTY

BLUE MARLIN OFFSHORE PORT PROJECT
APPENDIX A-4 - SOILS MAP

COUNTY/PARISH:	ORANGE	DRAWN BY:	JC
STATE:	TEXAS	CHECKED BY:	CW
DATE:	2020-09-18	PROJECTION:	NAD83 UTM ZONE 15

PREPARED BY:
EXP Energy Services Inc.

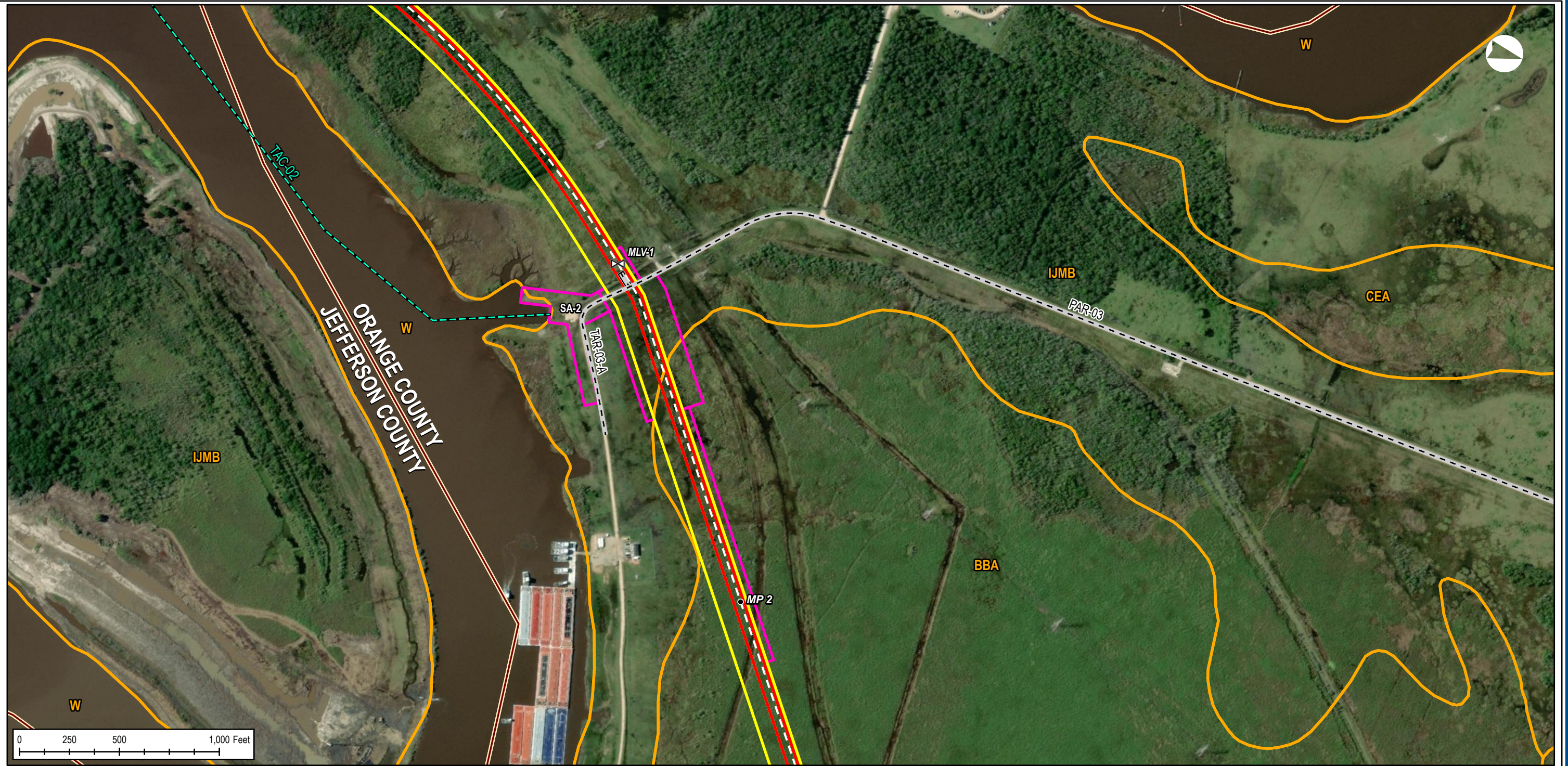
T: +1.713.439.3600
F: +1.713.963.9085
1800 WEST LOOP SOUTH, SUITE 850
HOUSTON, TX 77027, USA
www.exp.com



• BUILDINGS • EARTH & ENVIRONMENT • ENERGY •
• INDUSTRIAL • INFRASTRUCTURE • SUSTAINABILITY •

DWG: 0801-03-002 SHEET: 32

BLUE MARLIN OFFSHORE PORT PROJECT - APPENDIX A-4 - SOILS MAP - PAR-03



BLUE MARLIN OFFSHORE PORT PROJECT VICINITY MAP

LEGEND	
• PROPOSED ONSHORE PIPELINE MILEPOST	█ ATWS
— CANAL	█ TEMPORARY EASEMENT
- - ACCESS ROAD	█ PERMANENT EASEMENT
⊗ VALVE	█ SOILS DATA (SSUGRO)
— PROPOSED ONSHORE PIPELINE CL	█ COUNTY
█ PERMANENT ACCESS ROAD EASEMENT	

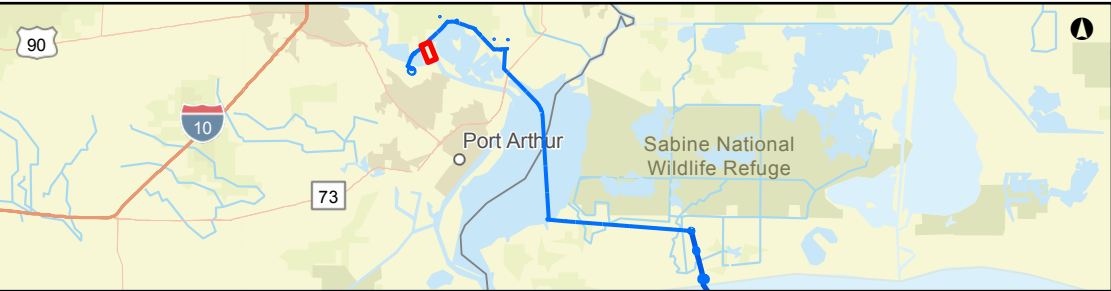
BLUE MARLIN OFFSHORE PORT PROJECT APPENDIX A-4 - SOILS MAP			
COUNTY/PARISH:	ORANGE	DRAWN BY:	JC
STATE:	TEXAS	CHECKED BY:	CW
DATE:	2020-09-18	PROJECTION:	NAD83 UTM ZONE 15

PREPARED BY:
EXP Energy Services Inc.
 T: +1.713.439.3600
 F: +1.713.963.9085
 1800 WEST LOOP SOUTH, SUITE 850
 HOUSTON, TX 77027, USA
www.exp.com

• BUILDINGS • EARTH & ENVIRONMENT • ENERGY •
 • INDUSTRIAL • INFRASTRUCTURE • SUSTAINABILITY •

DWG: 0801-03-002 SHEET: 33

BLUE MARLIN OFFSHORE PORT PROJECT - APPENDIX A-4 - SOILS MAP - TAC-04



BLUE MARLIN OFFSHORE PORT PROJECT VICINITY MAP

LEGEND

- CANAL
- PROPOSED ONSHORE PIPELINE CL
- PROPOSED ONSHORE PIPELINE CL (HDD SEGMENT)
- ATWS
- TEMPORARY EASEMENT
- PERMANENT EASEMENT
- HDD EASEMENT
- SOILS DATA (SSUGRO)
- COUNTY

**BLUE MARLIN OFFSHORE PORT PROJECT
APPENDIX A-4 - SOILS MAP**

COUNTY/PARISH:	ORANGE	DRAWN BY:	JC
STATE:	TEXAS	CHECKED BY:	CW
DATE:	2020-09-18	PROJECTION:	NAD83 UTM ZONE 15

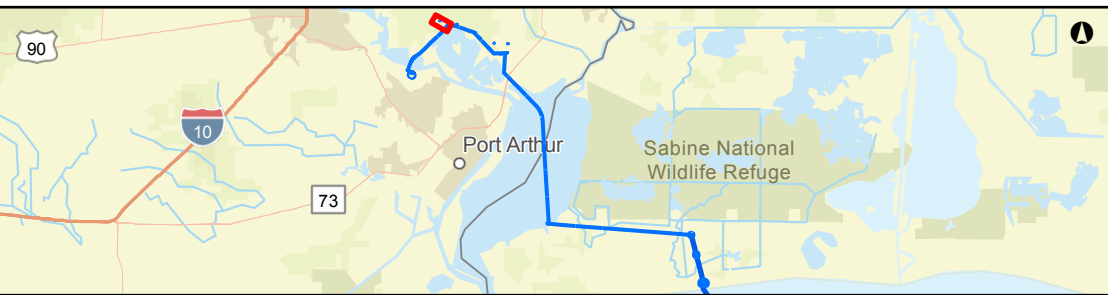
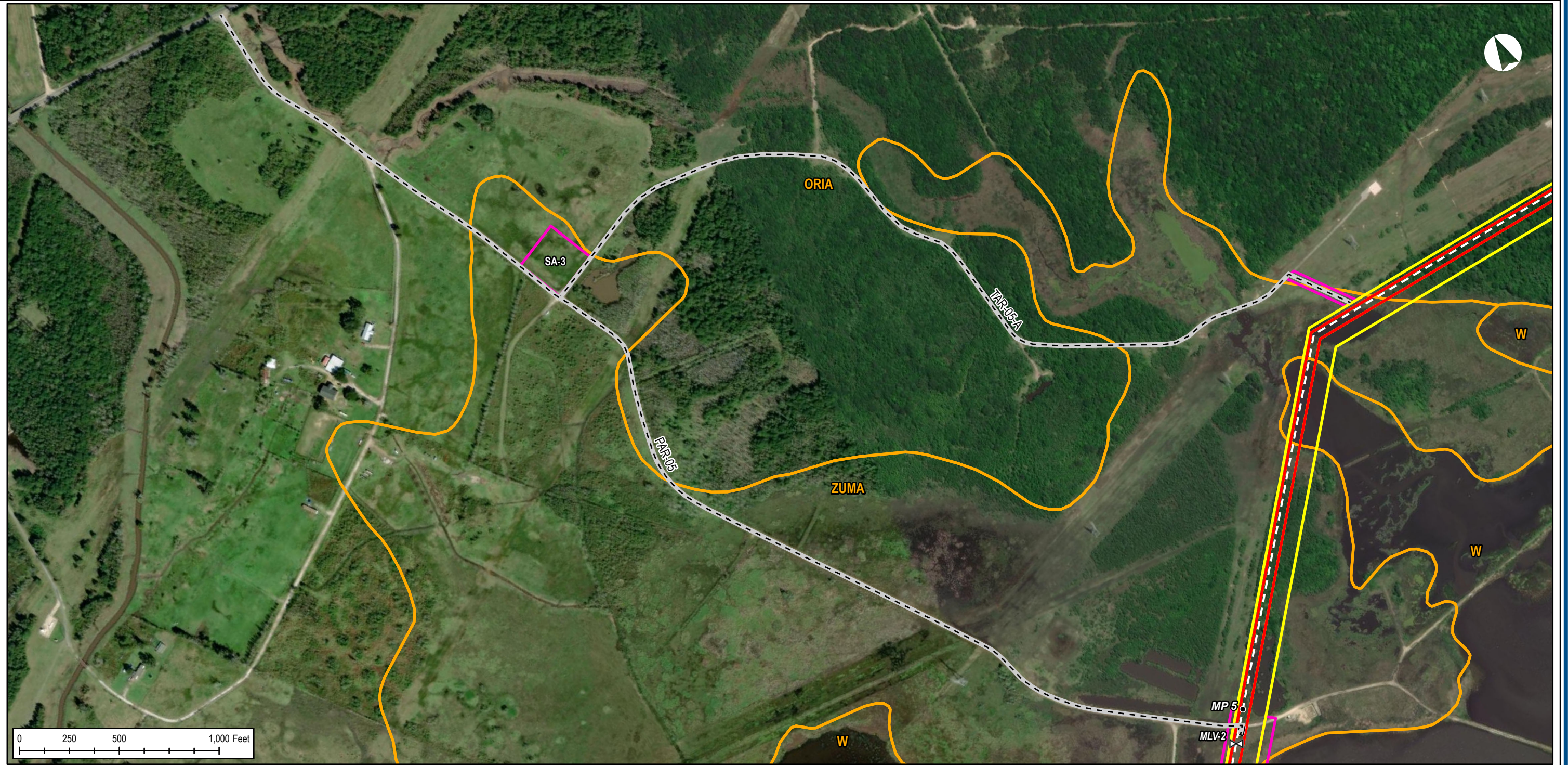
PREPARED BY:
EXP Energy Services Inc.
 T: +1.713.439.3600
 F: +1.713.963.9085
 1800 WEST LOOP SOUTH, SUITE 850
 HOUSTON, TX 77027, USA
www.exp.com



• BUILDINGS • EARTH & ENVIRONMENT • ENERGY •
 • INDUSTRIAL • INFRASTRUCTURE • SUSTAINABILITY •

DWG: 0801-03-002 SHEET: 34

BLUE MARLIN OFFSHORE PORT PROJECT - APPENDIX A-4 - SOILS MAP - TAR-05-A & PAR-05



BLUE MARLIN OFFSHORE PORT PROJECT VICINITY MAP

LEGEND

- PROPOSED ONSHORE PIPELINE MILEPOST
- - ACCESS ROAD
- ⊗ VALVE
- PROPOSED ONSHORE PIPELINE CL
- ▭ PERMANENT ACCESS ROAD EASEMENT
- ▭ ATWS
- ▭ TEMPORARY EASEMENT
- ▭ PERMANENT EASEMENT
- ▭ SOILS DATA (SSUGRO)
- ▭ COUNTY

BLUE MARLIN OFFSHORE PORT PROJECT
APPENDIX A-4 - SOILS MAP

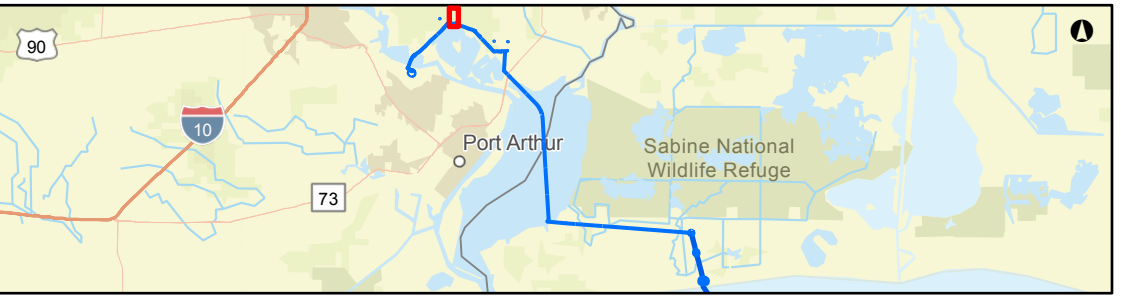
COUNTY/PARISH:	ORANGE	DRAWN BY:	JC
STATE:	TEXAS	CHECKED BY:	CW
DATE:	2020-09-18	PROJECTION:	NAD83 UTM ZONE 15

PREPARED BY:
EXP Energy Services Inc.
T: +1.713.439.3600
F: +1.713.963.9085
1800 WEST LOOP SOUTH, SUITE 850
HOUSTON, TX 77027, USA
www.exp.com

• BUILDINGS • EARTH & ENVIRONMENT • ENERGY •
• INDUSTRIAL • INFRASTRUCTURE • SUSTAINABILITY •

DWG: 0801-03-002 SHEET: 35

BLUE MARLIN OFFSHORE PORT PROJECT - APPENDIX A-4 - SOILS MAP - TAR-06



BLUE MARLIN OFFSHORE PORT PROJECT VICINITY MAP

LEGEND

- PROPOSED ONSHORE PIPELINE MILEPOST
- - ACCESS ROAD
- - PROPOSED ONSHORE PIPELINE CL
- ATWS
- ▭ TEMPORARY EASEMENT
- ▭ PERMANENT EASEMENT
- ▭ SOILS DATA (SSUGRO)
- ▭ COUNTY

BLUE MARLIN OFFSHORE PORT PROJECT
APPENDIX A-4 - SOILS MAP

COUNTY/PARISH:	ORANGE	DRAWN BY:	JC
STATE:	TEXAS	CHECKED BY:	CW
DATE:	2020-09-18	PROJECTION:	NAD83 UTM ZONE 15

PREPARED BY:
EXP Energy Services Inc.

T: +1.713.439.3600
F: +1.713.963.9085
1800 WEST LOOP SOUTH, SUITE 850
HOUSTON, TX 77027, USA
www.exp.com



• BUILDINGS • EARTH & ENVIRONMENT • ENERGY •
• INDUSTRIAL • INFRASTRUCTURE • SUSTAINABILITY •

DWG: 0801-03-002 SHEET: 36

BLUE MARLIN OFFSHORE PORT PROJECT - APPENDIX A-4 - SOILS MAP - TAR-11



BLUE MARLIN OFFSHORE PORT PROJECT VICINITY MAP

LEGEND

- ACCESS ROAD
- - PROPOSED ONSHORE PIPELINE CL
- - PROPOSED ONSHORE PIPELINE CL (HDD SEGMENT)
- ATWS
- TEMPORARY EASEMENT
- PERMANENT EASEMENT
- HDD EASEMENT
- SOILS DATA (SSUGRO)
- COUNTY

BLUE MARLIN OFFSHORE PORT PROJECT
APPENDIX A-4 - SOILS MAP

COUNTY/PARISH:	ORANGE	DRAWN BY:	JC
STATE:	TEXAS	CHECKED BY:	CW
DATE:	2020-09-18	PROJECTION:	NAD83 UTM ZONE 15

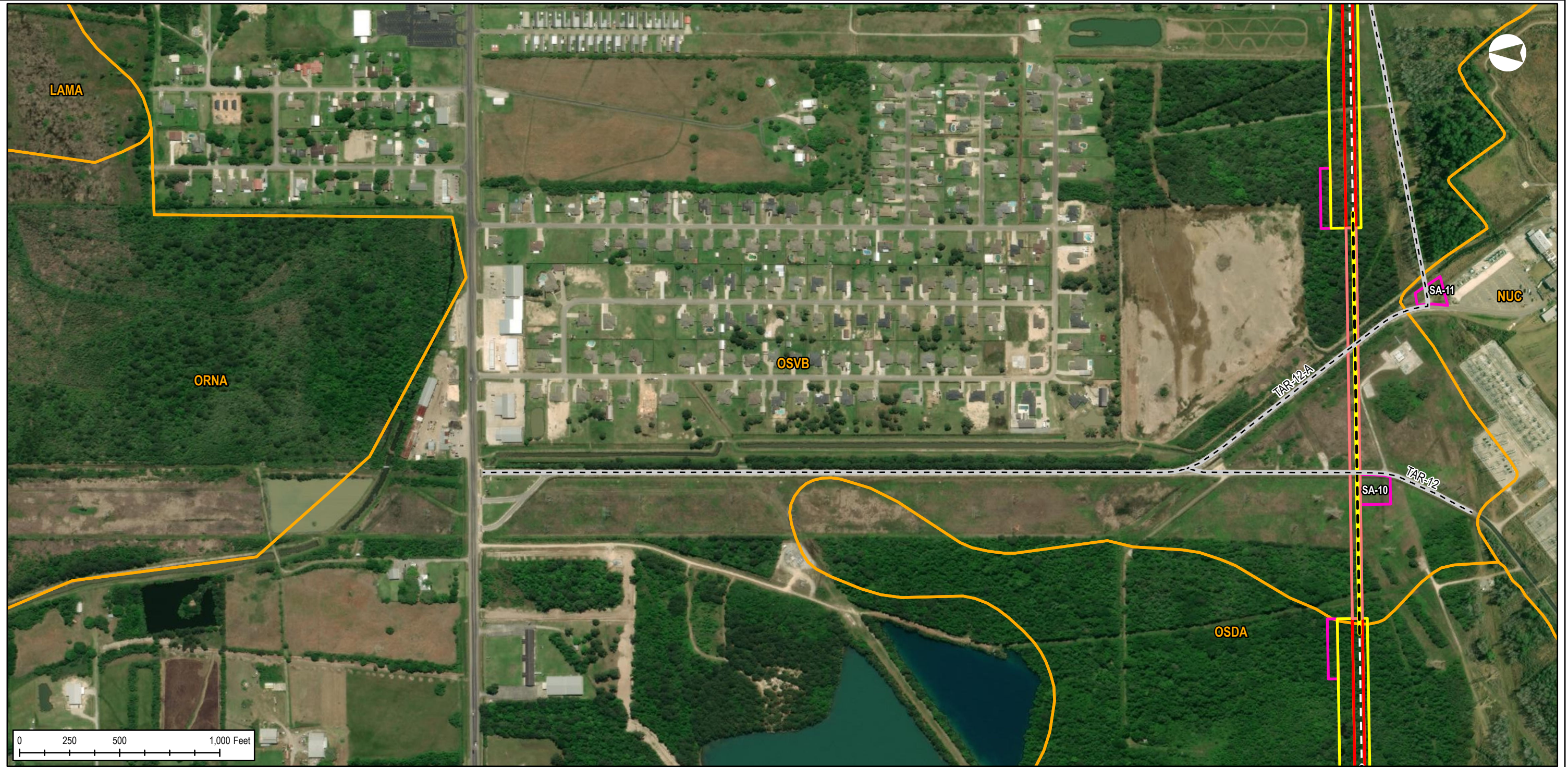
PREPARED BY:
EXP Energy Services Inc.

T: +1.713.439.3600
F: +1.713.963.9085
1800 WEST LOOP SOUTH, SUITE 850
HOUSTON, TX 77027, USA
www.exp.com

• BUILDINGS • EARTH & ENVIRONMENT • ENERGY •
• INDUSTRIAL • INFRASTRUCTURE • SUSTAINABILITY •

DWG: 0801-03-002 SHEET: 37

BLUE MARLIN OFFSHORE PORT PROJECT - APPENDIX A-4 - SOILS MAP - TAR-12



BLUE MARLIN OFFSHORE PORT PROJECT VICINITY MAP

- LEGEND**
- PROPOSED ONSHORE PIPELINE MILEPOST
 - - ACCESS ROAD
 - PROPOSED ONSHORE PIPELINE CL
 - PROPOSED ONSHORE PIPELINE CL (HDD SEGMENT)
 - ATWS
 - TEMPORARY EASEMENT
 - PERMANENT EASEMENT
 - HDD EASEMENT
 - SOILS DATA (SSUGRO)
 - COUNTY

BLUE MARLIN OFFSHORE PORT PROJECT
APPENDIX A-4 - SOILS MAP

COUNTY/PARISH: ORANGE DRAWN BY: JC
STATE: TEXAS CHECKED BY: CW

DATE: 2020-09-18 PROJECTION: NAD83 | UTM ZONE 15

PREPARED BY:
EXP Energy Services Inc.
T: +1.713.439.3600
F: +1.713.963.9085
1800 WEST LOOP SOUTH, SUITE 850
HOUSTON, TX 77027, USA
www.exp.com



• BUILDINGS • EARTH & ENVIRONMENT • ENERGY •
• INDUSTRIAL • INFRASTRUCTURE • SUSTAINABILITY •

DWG: 0801-03-002 SHEET: 38

BLUE MARLIN OFFSHORE PORT PROJECT - APPENDIX A-4 - SOILS MAP - TAR-14 & PAR-13



BLUE MARLIN OFFSHORE PORT PROJECT VICINITY MAP

LEGEND

- - ACCESS ROAD
- ⊗ VALVE
- PROPOSED ONSHORE PIPELINE CL
- ▭ PERMANENT ACCESS ROAD EASEMENT
- ▭ ATWS
- ▭ TEMPORARY EASEMENT
- ▭ PERMANENT EASEMENT
- ▭ SOILS DATA (SSUGRO)
- ▭ LOWER NECHES WILDLIFE MANAGEMENT AREA
- ▭ COUNTY

BLUE MARLIN OFFSHORE PORT PROJECT
APPENDIX A-4 - SOILS MAP

COUNTY/PARISH:	ORANGE	DRAWN BY:	JC
STATE:	TEXAS	CHECKED BY:	CW
DATE:	2020-09-18	PROJECTION:	NAD83 UTM ZONE 15

PREPARED BY:
EXP Energy Services Inc.

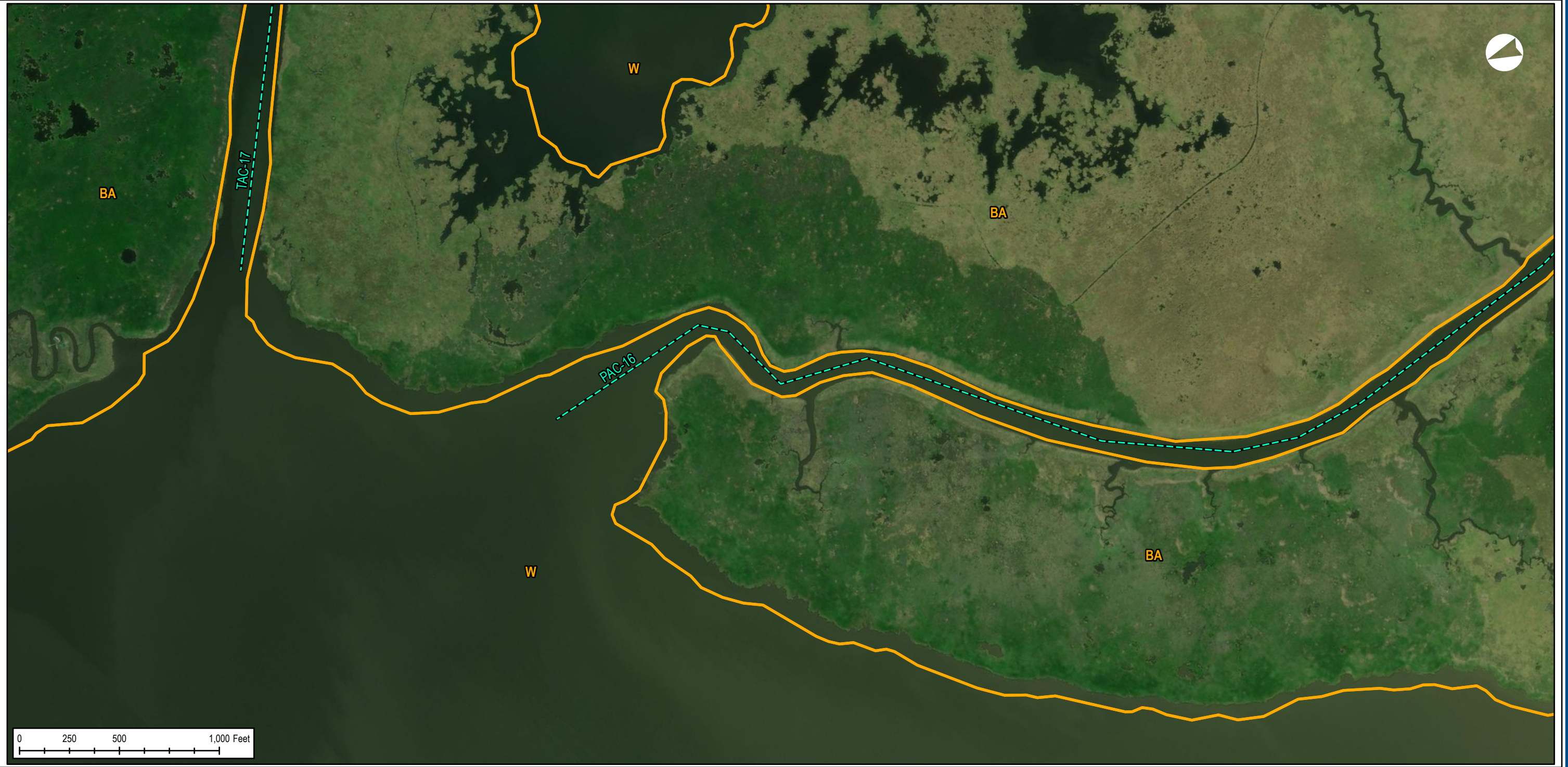
T: +1.713.439.3600
F: +1.713.963.9085
1800 WEST LOOP SOUTH, SUITE 850
HOUSTON, TX 77027, USA
www.exp.com

exp.

• BUILDINGS • EARTH & ENVIRONMENT • ENERGY •
• INDUSTRIAL • INFRASTRUCTURE • SUSTAINABILITY •

DWG: 0801-03-002 SHEET: 39

BLUE MARLIN OFFSHORE PORT PROJECT - APPENDIX A-4 - SOILS MAP - PAC-16




BLUE MARLIN OFFSHORE PORT PROJECT VICINITY MAP

- LEGEND**
- CANAL
 - SOILS DATA (SSUGRO)
 - COUNTY

BLUE MARLIN OFFSHORE PORT PROJECT APPENDIX A-4 - SOILS MAP			
COUNTY/PARISH:	CAMERON	DRAWN BY:	JC
STATE:	LOUISIANA	CHECKED BY:	CW
DATE:	2020-09-18	PROJECTION:	NAD83 UTM ZONE 15

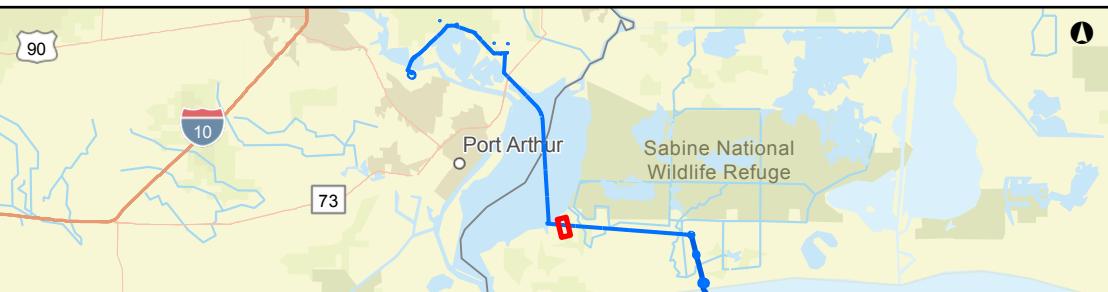
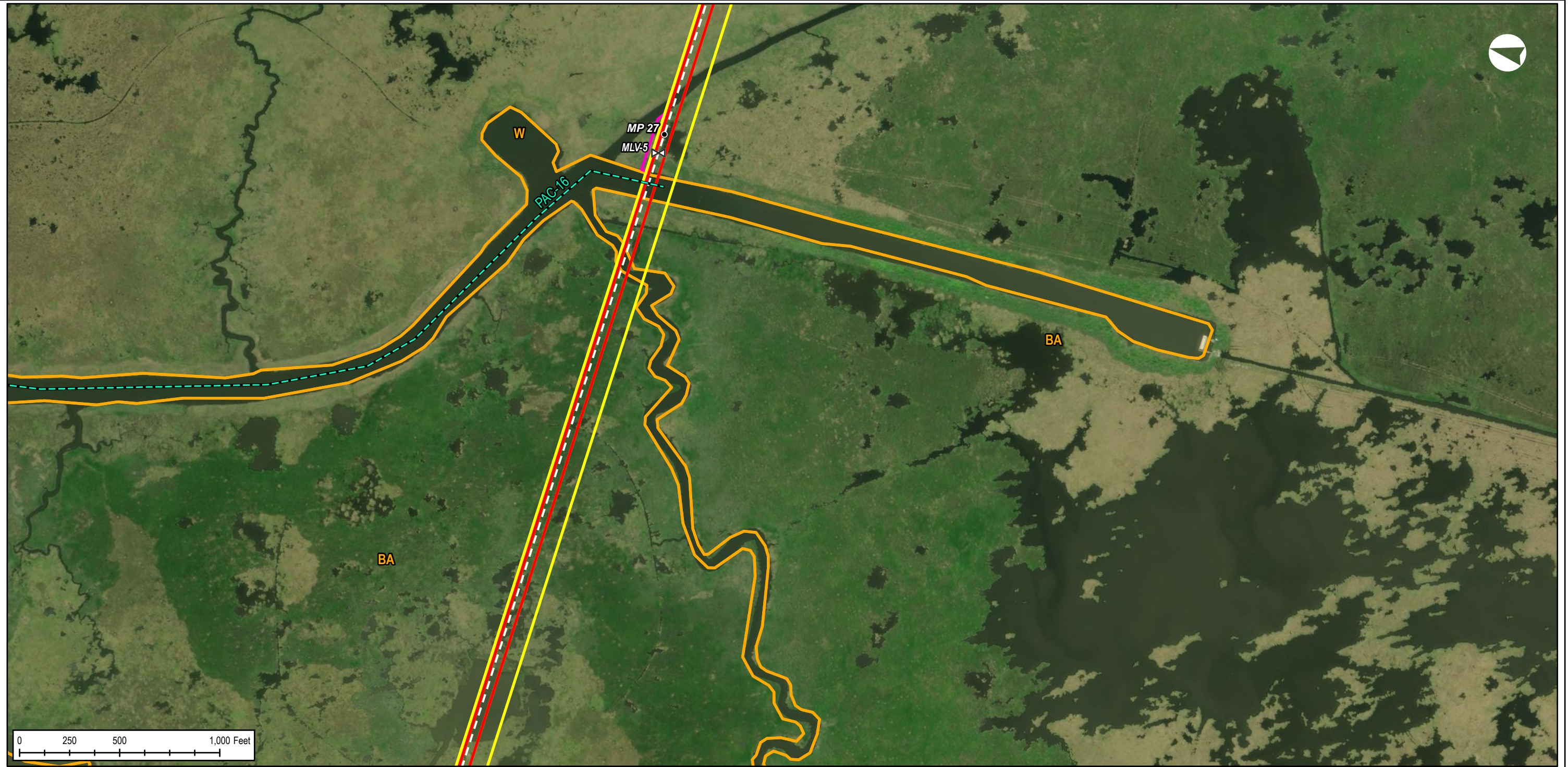
PREPARED BY:
EXP Energy Services Inc.
 T: +1.713.439.3600
 F: +1.713.963.9085
 1800 WEST LOOP SOUTH, SUITE 850
 HOUSTON, TX 77027, USA
www.exp.com



• BUILDINGS • EARTH & ENVIRONMENT • ENERGY •
 • INDUSTRIAL • INFRASTRUCTURE • SUSTAINABILITY •

DWG: 0801-03-002 SHEET: 40

BLUE MARLIN OFFSHORE PORT PROJECT - APPENDIX A-4 - SOILS MAP - PAC-16



BLUE MARLIN OFFSHORE PORT PROJECT VICINITY MAP

- LEGEND**
- PROPOSED ONSHORE PIPELINE MILEPOST
 - CANAL
 - ⊗ VALVE
 - PROPOSED ONSHORE PIPELINE CL
 - █ ATWS
 - █ TEMPORAY EASEMENT
 - █ PERMANENT EASEMENT
 - █ SOILS DATA (SSUGRO)
 - █ COUNTY

BLUE MARLIN OFFSHORE PORT PROJECT
APPENDIX A-4 - SOILS MAP

COUNTY/PARISH:	CAMERON	DRAWN BY:	JC
STATE:	LOUISIANA	CHECKED BY:	CW

DATE: 2020-09-18 PROJECTION: NAD83 | UTM ZONE 15

PREPARED BY:
EXP Energy Services Inc.

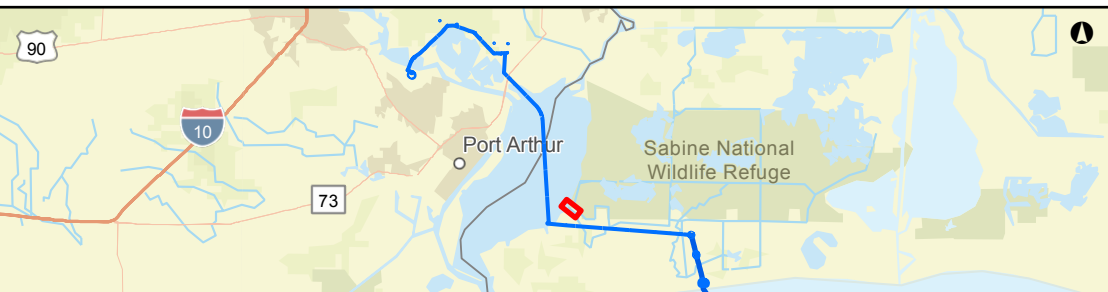
T: +1.713.439.3600
F: +1.713.963.9085
1800 WEST LOOP SOUTH, SUITE 850
HOUSTON, TX 77027, USA
www.exp.com



• BUILDINGS • EARTH & ENVIRONMENT • ENERGY •
• INDUSTRIAL • INFRASTRUCTURE • SUSTAINABILITY •

DWG: 0801-03-002 SHEET: 41

BLUE MARLIN OFFSHORE PORT PROJECT - APPENDIX A-4 - SOILS MAP - TAC-17



BLUE MARLIN OFFSHORE PORT PROJECT VICINITY MAP

- LEGEND**
- CANAL
 - SOILS DATA (SSUGRO)
 - COUNTY

BLUE MARLIN OFFSHORE PORT PROJECT
APPENDIX A-4 - SOILS MAP

COUNTY/PARISH:	CAMERON	DRAWN BY:	JC
STATE:	LOUISIANA	CHECKED BY:	CW
DATE:	2020-09-18	PROJECTION:	NAD83 UTM ZONE 15

PREPARED BY:
EXP Energy Services Inc.

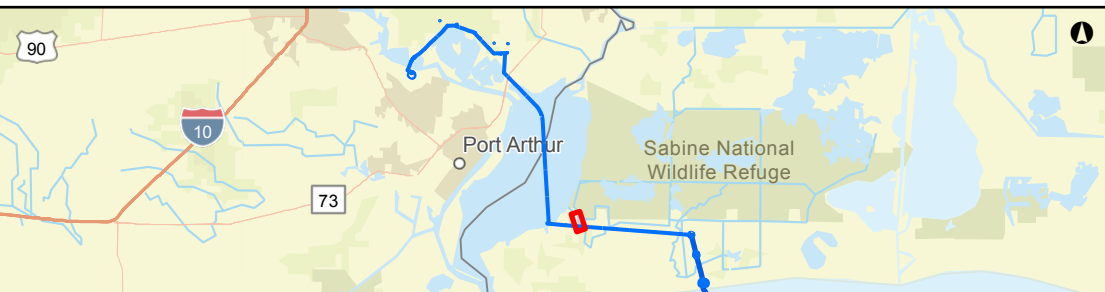
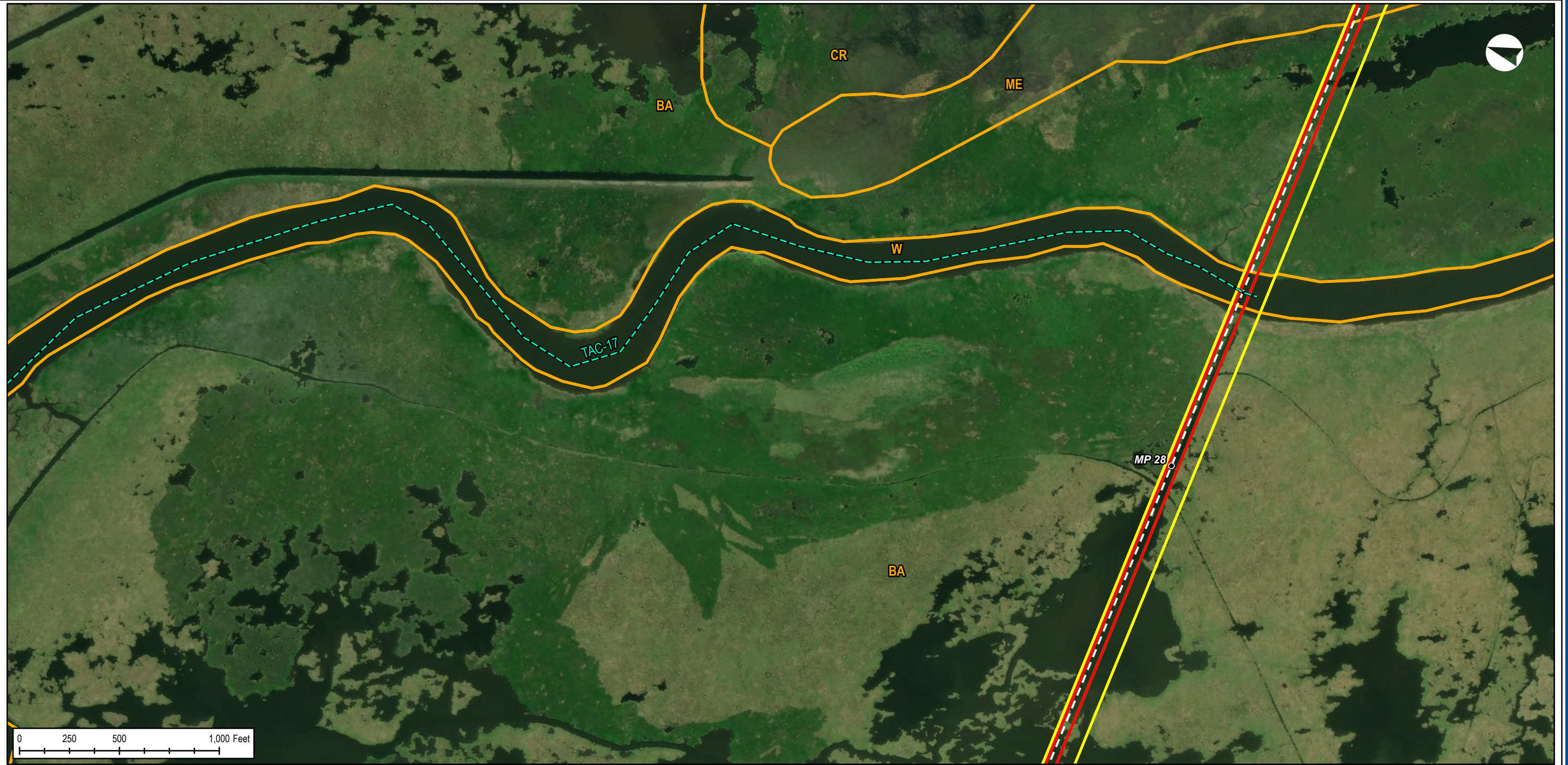
T: +1.713.439.3600
F: +1.713.963.9085
1800 WEST LOOP SOUTH, SUITE 850
HOUSTON, TX 77027, USA
www.exp.com



• BUILDINGS • EARTH & ENVIRONMENT • ENERGY •
• INDUSTRIAL • INFRASTRUCTURE • SUSTAINABILITY •

DWG: 0801-03-002 SHEET: 42

BLUE MARLIN OFFSHORE PORT PROJECT - APPENDIX A-4 - SOILS MAP - TAC-17



BLUE MARLIN OFFSHORE PORT PROJECT VICINITY MAP

LEGEND

- PROPOSED ONSHORE PIPELINE MILEPOST
- CANAL
- PROPOSED ONSHORE PIPELINE CL
- TEMPORARY EASEMENT
- PERMANENT EASEMENT
- SOILS DATA (SSUGRO)
- COUNTY

BLUE MARLIN OFFSHORE PORT PROJECT
APPENDIX A-4 - SOILS MAP

COUNTY/PARISH:	CAMERON	DRAWN BY:	JC
STATE:	LOUISIANA	CHECKED BY:	CW
DATE:	2020-09-18	PROJECTION:	NAD83 UTM ZONE 15

PREPARED BY:

EXP Energy Services Inc.

T: +1.713.439.3600
F: +1.713.963.9085
1800 WEST LOOP SOUTH, SUITE 850
HOUSTON, TX 77027, USA
www.exp.com



• BUILDINGS • EARTH & ENVIRONMENT • ENERGY •
• INDUSTRIAL • INFRASTRUCTURE • SUSTAINABILITY •

DWG: 0801-03-002 SHEET: 43

BLUE MARLIN OFFSHORE PORT PROJECT - APPENDIX A-4 - SOILS MAP - PAR-19



BLUE MARLIN OFFSHORE PORT PROJECT VICINITY MAP

- LEGEND**
- - ACCESS ROAD
 - SOILS DATA (SSUGRO)
 - COUNTY

BLUE MARLIN OFFSHORE PORT PROJECT
APPENDIX A-4 - SOILS MAP

COUNTY/PARISH:	CAMERON	DRAWN BY:	JC
STATE:	LOUISIANA	CHECKED BY:	CW

DATE: 2020-09-18 PROJECTION: NAD83 | UTM ZONE 15

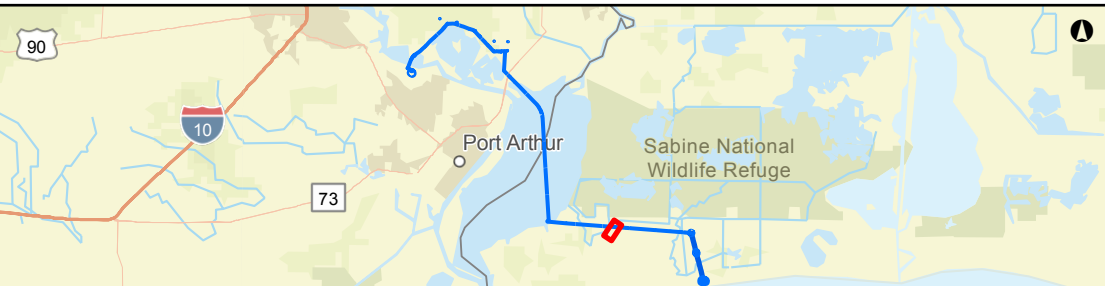
PREPARED BY:
EXP Energy Services Inc.
T: +1.713.439.3600
F: +1.713.963.9085
1800 WEST LOOP SOUTH, SUITE 850
HOUSTON, TX 77027, USA
www.exp.com



• BUILDINGS • EARTH & ENVIRONMENT • ENERGY •
• INDUSTRIAL • INFRASTRUCTURE • SUSTAINABILITY •

DWG: 0801-03-002 SHEET: 44

BLUE MARLIN OFFSHORE PORT PROJECT - APPENDIX A-4 - SOILS MAP - PAR-19



BLUE MARLIN OFFSHORE PORT PROJECT VICINITY MAP

LEGEND

- PROPOSED ONSHORE PIPELINE MILEPOST
- ACCESS ROAD
- ⊗ VALVE
- PROPOSED ONSHORE PIPELINE CL
- █ ATWS
- █ TEMPORAY EASEMENT
- █ PERMANENT EASEMENT
- █ SOILS DATA (SSUGRO)
- █ COUNTY

BLUE MARLIN OFFSHORE PORT PROJECT
APPENDIX A-4 - SOILS MAP

COUNTY/PARISH:	CAMERON	DRAWN BY:	JC
STATE:	LOUISIANA	CHECKED BY:	CW

DATE: 2020-09-18 PROJECTION: NAD83 | UTM ZONE 15

PREPARED BY:
EXP Energy Services Inc.

T: +1.713.439.3600
F: +1.713.963.9085
1800 WEST LOOP SOUTH, SUITE 850
HOUSTON, TX 77027, USA
www.exp.com

• BUILDINGS • EARTH & ENVIRONMENT • ENERGY •
• INDUSTRIAL • INFRASTRUCTURE • SUSTAINABILITY •

DWG: 0801-03-002 SHEET: 45

BLUE MARLIN OFFSHORE PORT PROJECT - APPENDIX A-4 - SOILS MAP - PAR-20



BLUE MARLIN OFFSHORE PORT PROJECT VICINITY MAP

- LEGEND**
- - ACCESS ROAD
 - SOILS DATA (SSUGRO)
 - COUNTY

BLUE MARLIN OFFSHORE PORT PROJECT
APPENDIX A-4 - SOILS MAP

COUNTY/PARISH:	CAMERON	DRAWN BY:	JC
STATE:	LOUISIANA	CHECKED BY:	CW

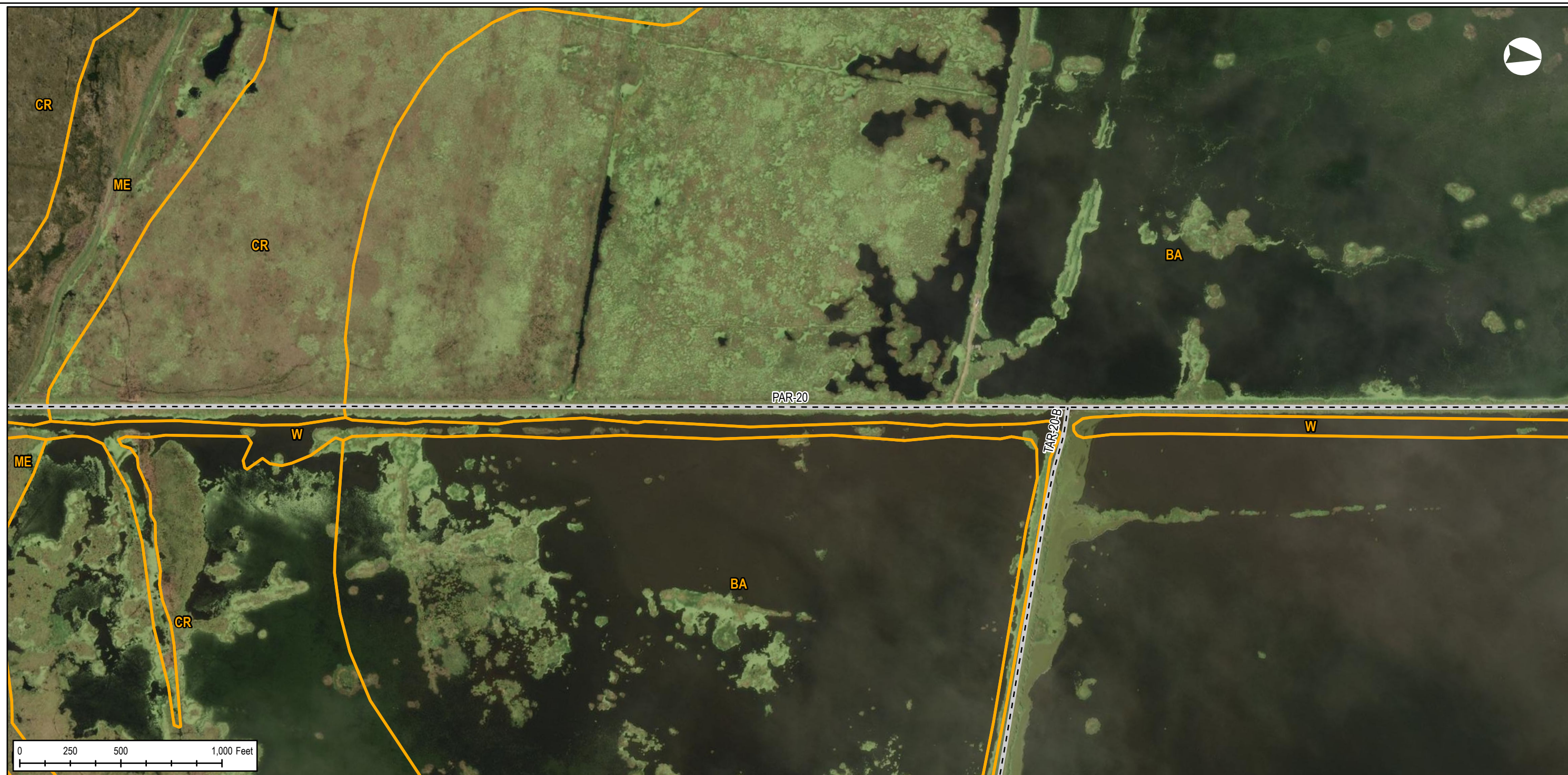
PREPARED BY:
EXP Energy Services Inc.
T: +1.713.439.3600
F: +1.713.963.9085
1800 WEST LOOP SOUTH, SUITE 850
HOUSTON, TX 77027, USA
www.exp.com



- BUILDINGS • EARTH & ENVIRONMENT • ENERGY •
- INDUSTRIAL • INFRASTRUCTURE • SUSTAINABILITY •

DATE: 2020-09-18 PROJECTION: NAD83 | UTM ZONE 15

DWG: 0801-03-002 SHEET: 46



BLUE MARLIN OFFSHORE PORT PROJECT VICINITY MAP

- LEGEND**
- - ACCESS ROAD
 - SOILS DATA (SSUGRO)
 - COUNTY

BLUE MARLIN OFFSHORE PORT PROJECT
APPENDIX A-4 - SOILS MAP

COUNTY/PARISH:	CAMERON	DRAWN BY:	JC
STATE:	LOUISIANA	CHECKED BY:	CW

DATE: 2020-09-18 PROJECTION: NAD83 | UTM ZONE 15

PREPARED BY:
EXP Energy Services Inc.

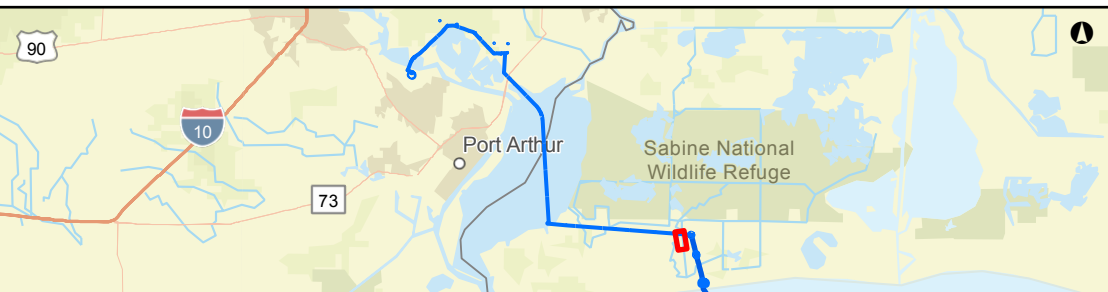
T: +1.713.439.3600
F: +1.713.963.9085
1800 WEST LOOP SOUTH, SUITE 850
HOUSTON, TX 77027, USA
www.exp.com



• BUILDINGS • EARTH & ENVIRONMENT • ENERGY •
• INDUSTRIAL • INFRASTRUCTURE • SUSTAINABILITY •

DWG: 0801-03-002 SHEET: 47

BLUE MARLIN OFFSHORE PORT PROJECT - APPENDIX A-4 - SOILS MAP - PAR-20 & TAR-20-A



BLUE MARLIN OFFSHORE PORT PROJECT VICINITY MAP

LEGEND

- PROPOSED ONSHORE PIPELINE MILEPOST
- ACCESS ROAD
- - PROPOSED ONSHORE PIPELINE CL
- █ ATWS
- █ TEMPORARY EASEMENT
- █ PERMANENT EASEMENT
- █ SOILS DATA (SSUGRO)
- █ COUNTY

BLUE MARLIN OFFSHORE PORT PROJECT
APPENDIX A-4 - SOILS MAP

COUNTY/PARISH:	CAMERON	DRAWN BY:	JC
STATE:	LOUISIANA	CHECKED BY:	CW
DATE:	2020-09-18	PROJECTION:	NAD83 UTM ZONE 15

PREPARED BY:

EXP Energy Services Inc.

T: +1.713.439.3600
F: +1.713.963.9085
1800 WEST LOOP SOUTH, SUITE 850
HOUSTON, TX 77027, USA
www.exp.com



• BUILDINGS • EARTH & ENVIRONMENT • ENERGY •
• INDUSTRIAL • INFRASTRUCTURE • SUSTAINABILITY •

DWG: 0801-03-002 SHEET: 48

BLUE MARLIN OFFSHORE PORT PROJECT - APPENDIX A-4 - SOILS MAP - PAR-20



BLUE MARLIN OFFSHORE PORT PROJECT VICINITY MAP

LEGEND	
○ EXISTING STINGRAY MAINLINE MILEPOST	▬ EXISTING STINGRAY EASEMENT (NO IMPACT)
● PROPOSED ONSHORE PIPELINE MILEPOST	▬ TEMPORARY EASEMENT
- - ACCESS ROAD	▬ PERMANENT EASEMENT
⊗ VALVE	▬ EXISTING FACILITY FOOTPRINT / STINGRAY EASEMENT
▬ EXISTING STINGRAY MAINLINE	▬ SOILS DATA (SSUGRO)
▬ PROPOSED ONSHORE PIPELINE CL	▬ COUNTY
▬ ATWS	

BLUE MARLIN OFFSHORE PORT PROJECT APPENDIX A-4 - SOILS MAP			
COUNTY/PARISH:	CAMERON	DRAWN BY:	JC
STATE:	LOUISIANA	CHECKED BY:	CW
DATE: 2020-09-18	PROJECTION: NAD83 UTM ZONE 15	DWG: 0801-03-002	SHEET: 49

PREPARED BY:
EXP Energy Services Inc.
 T: +1.713.439.3600
 F: +1.713.963.9085
 1800 WEST LOOP SOUTH, SUITE 850
 HOUSTON, TX 77027, USA
www.exp.com



• BUILDINGS • EARTH & ENVIRONMENT • ENERGY •
 • INDUSTRIAL • INFRASTRUCTURE • SUSTAINABILITY •

BLUE MARLIN OFFSHORE PORT PROJECT - APPENDIX A-4 - SOILS MAP - TAR-20-B



BLUE MARLIN OFFSHORE PORT PROJECT VICINITY MAP

LEGEND

- - ACCESS ROAD
- - EXISTING STINGRAY MAINLINE
- █ ATWS
- - EXISTING STINGRAY EASEMENT (NO IMPACT)
- █ EXISTING FACILITY FOOTPRINT / STINGRAY EASEMENT
- █ SOILS DATA (SSUGRO)
- █ COUNTY

BLUE MARLIN OFFSHORE PORT PROJECT
APPENDIX A-4 - SOILS MAP

COUNTY/PARISH:	CAMERON	DRAWN BY:	JC
STATE:	LOUISIANA	CHECKED BY:	CW

DATE: 2020-09-18 PROJECTION: NAD83 | UTM ZONE 15

PREPARED BY:

EXP Energy Services Inc.

T: +1.713.439.3600
F: +1.713.963.9085
1800 WEST LOOP SOUTH, SUITE 850
HOUSTON, TX 77027, USA
www.exp.com



• BUILDINGS • EARTH & ENVIRONMENT • ENERGY •
• INDUSTRIAL • INFRASTRUCTURE • SUSTAINABILITY •

DWG: 0801-03-002 SHEET: 50